

November 2015

- 12 What is the Internet of Things and Why Should it Matter to Us?
- 24 Data Analytics Through Statistical Techniques
- 42 The Power of Data: The Most Important Questions Any Leader Must Ask

Much More!

the **pcb** magazine

an IConnect007 publication

The Data Factor(y): The Power of Data

www.mutrax.com**mutrax**
THE BETTER WAY

Click here to search for your listing and upgrade NOW!



THE PCB List works ...and it can work for you!

"When I joined Cirexx last year I shared with my colleagues the positive experiences I've had with The PCB List.

We listed Cirexx with a detailed Showcase on The PCB List and it has resulted in quotes and orders!

The PCB List is not only brand and image must for all PCB manufacturers, but also another set of boots on the ground directly generating business."

- Al Wasserzug

Sr. Business Development Manager
at **Cirexx International**

**Over 3000 members are
already registered and
using *THE* PCB List.**

**Get Found! Upgrade to
a Showcase and Start
Quoting Today.**



The best way to find a PCB fabricator, *anywhere.*

www.thepcblist.com

INTERNATIONAL PRINTED CIRCUIT & APEX SOUTH CHINA FAIR

2015 國際線路板及電子組裝華南展覽會

Presented by HKPCA & IPC 由HKPCA及IPC聯合主辦

**GLOBAL EVENT.
GLOBAL VISION**
全球盛典 · 飛躍國際

2015.12.2-4
Shenzhen Convention &
Exhibition Center, China
Halls 1, 2 & 4
www.hkpcapc-show.org

THE WORLD'S BIGGEST PCB & EA SHOW GATHERING WORLDWIDE INDUSTRY ELITES UNDER ONE ROOF

- Visit the global largest ever show with an additional Hall 4 opened
- See the latest products and solutions from more than 500 exhibitors and over 2,500 booths in 3 halls with show floor area over 50,000sq.m
- Experience a more professional procurement in the world's brand new "Smart Automation" & "Rigid-Flex" Pavilions
- Strengthen your knowledge through the presentation of industry leaders and experts
- Expand your network worldwide by joining various concurrent events like welcome dinner, HKPCA & IPC Show Hand Soldering Competition, onsite forum etc.



**PRE-REGISTER TO GET A
"VISITOR PRE-REGISTRATION
GIFT" ONSITE (*WHILE STOCK LASTS)**

Pre-register now at
www.hkpcapc-show.org or WeChat!

Follow our WeChat
to receive the updated
show news and to win a gift!

Show Enquiry

Event Manager - Baobab Tree Event

Hong Kong & Overseas

Ms. Denise Ho / Ms. Faye Lau

Tel : (852) 3520-3612

E-mail : denise.ho@baobab-tree-event.com /
faye.lau@baobab-tree-event.com

China

Ms. May Chen / Ms. Kathy He

Tel : (86-20) 133-6057-7973

E-mail : may.chen@baobab-tree-event.com /
kathy.he@baobab-tree-event.com

**2015
HKPCA & IPC
Show**

Organizers



Association Connecting Electronics Industries



Supporting Organizations

SZETITC

SZCEA

Event Manager



the pcb magazine

an IConnect007 publication

This Month's Feature Articles

THE DATA FACTOR(Y): The Power of Data

This month, *The PCB Magazine* presents The Data Factor(y): The Power of Data. Feature articles explore and explain why accurate data is important, how to gather it (Internet of Things, for starters), and what exactly you can do with it once you've got it.

FEATURES

24 Data Analytics Through Statistical Techniques

by Steve Williams



42 The Power of Data: The Most Important Questions Any Leader Must Ask

by Dave Dibble



FEATURE COLUMNS

12 What is the Internet of Things and Why Should it Matter to Us?

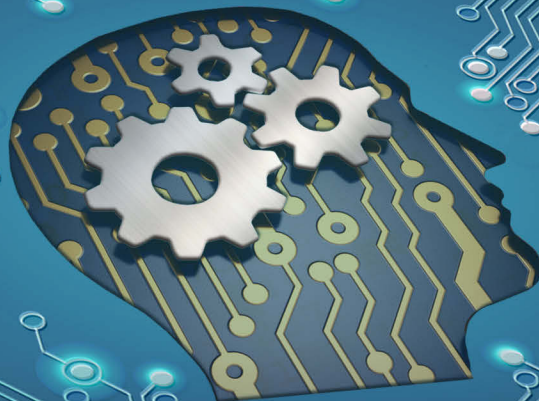
by Jason Marsh



36 Process Controls for Flexible Circuit Fabrication

by Dave Becker





for nearly 70 years
Inspiring Innovation
with leading-edge solutions

GemStone™
esi

The Latest in our 5335 Series of
Flex Circuit Laser Processing Systems



CornerStone™
esi

UV Laser Drilling System

learn more at esi.com



ESI delivers solutions that empower our customers to innovate and stay ahead of the competition in PCB manufacturing. Our patented Third Dynamics technology offers the highest throughput at the smallest footprint. **See it in action!**

esi®

Designed for Brilliance.
Engineered for Production.

NOVEMBER 2015

VOLUME 5

NUMBER 11

THE DEFINITIVE
INTERACTIVE MAGAZINE
DEDICATED TO THE
GLOBAL PCB INDUSTRY

thepcbmagazine.com

the pcb magazine

an IConnect007 publication

CONTENTS

COLUMNS

8 Data, Data and More Data!*by Patty Goldman***64 Digital Imaging Revisited***by Karl Dietz*

ARTICLES

50 Conducting Very High Currents Through PCB Substrates at High Ambient Temperatures*by Thomas Gottwald and Christian Rößle***70 As Vias Shrink, Opportunities for Laser Drilling Expand***by Dirk Müller, Ph.D.***78 Can Technology be Too Disruptive?***by Doug Bathauer*

SHORTS

34 Interim CEO Jeff McCreary on Changes at Isola**77 Imec and Ghent University Present Thermoplastically Deformable Electronic Circuits****82 Walking Robot Developed at Oregon State University**

HIGHLIGHTS

48 Supply Line**62 MilAero007****68 Market****84 Top Ten PCB007 Highlights**

DEPARTMENTS

86 Events Calendar**87 Advertisers Index & Masthead**



Low-loss Laminate Materials for RF/Microwave/Millimeter-wave Designs

For over 100 years, Isola has been driving technology forward while improving end-product design with top-performing laminate and prepregs.

Our legacy continues with global R&D pushing our product line to the forefront in demanding RF/microwave designs.

With 10 manufacturing sites around the world, global quick-turn capability, world-class technical service, measurement & modeling capabilities, and industry leading material development capabilities – Isola is well positioned to be your preferred RF/microwave partner.

The newest members of Isola's growing RF/Microwave laminate family now includes Terra Green™, a halogen-free, very low-loss, thermoset material that is available in a variety of laminate and prepreg offerings. This material is inexpensive to process – improving your company's bottom line, as well as the environment.

Astra®MT is a revolutionary ultra low-loss thermoset laminate replacement for PTFE, suitable for automotive radar, mm-wave and AESA applications.

I-Tera MT is available in core thicknesses from 0.002" to 0.018" and offers 18 different prepregs for optimal design flexibility.

I-Tera®MT RF is available in 20 and 30 mil cores and a 3.38 and 3.45 Dk.

	TerraGreen™	Astra® MT	I-Tera® MT/ I-Tera MT RF	IS680
Tg	200°C	200°C	200°C	200°C
Td	390°C	360°C	360°C	360°C
DK @ 10 GHz	3.45	3.00	3.45	2.80 - 3.45
Df @ 10 GHz	0.0030	0.0017	0.0031	0.0028 - 0.0036
CTE Z-axis (50 to 260°C)	2.90%	2.90%	2.80%	2.90%
T-260 & T-288	>60	>60	>60	>60
Halogen free	Yes	No	No	No
VLP-2 (2 micron Rz copper)	Standard	Standard	Available	Available
Stable Dk and Df over the temperature range	-55°C to +125°C	-40°C to +140°C	-55°C to +125°C	-55°C to +125°C
Optimized Global constructions for Pb-Free Assembly	Yes	Yes	Yes	Yes
Compatible with other Isola products for hybrid designs	Yes	Yes	Yes	For use in double-sided applications
Low PIM < -155 dBc	Yes	Yes	Yes	Yes

NOTE: Dk Df is at one resin %. The data, while believed to be accurate and based on analytical methods considered to be reliable, is for information purposes only. Any sales of these products will be governed by the terms and conditions of the agreement under which they are sold.



FREE WEBINAR

PCB Material Selection for RF/Microwave/Millimeter-wave Design

This webinar will educate you on how to select the appropriate PCB material for RF, microwave and millimeter-wave applications through careful consideration of cost constraints and system-performance parameters, such as the frequency of operation and bandwidth, the electrical size of board and its critical features, loss and uniformity requirements, temperature range of system operation, and thermal and processing considerations.

Visit us at
PRODUCTRONICA
2015
Nov 10-13
Hall B1, Booth 471

www.isola-group.com/RF

Data, Data and More Data!

by **Patty Goldman**

I-CONNECT007 TECHNICAL EDITOR

It seems that whenever I'm working on a magazine topic, suddenly it's everywhere. So much so that I begin to wonder who was in on our topic discussion. It was that way with this month's theme, "The Data Factor(y): The Power of Data." Articles suddenly seemed to be appearing all over the place, especially on the topic of the Internet of Things (IoT). Yeah, they were always there; I just started noticing them.

Speaking of the IoT, I found myself wondering, "What does that really mean and how does it affect us?" I read an article at Forbes.com, "A Simple Explanation of the 'Internet of Things'" that offered a solid explanation^[1], which really helped. Basically, it's all about connections connecting...electronically, of course. Personally, I

haven't felt a great need to wear an armband or have my front door lock automatically (I don't even like my car's locks activating automatically) or have my washing machine start up at some odd time. I have timers on lamps, and I use a few auto sensors for other things. Isn't that enough? Apparently, not anymore!

We did a survey on our topic this month, as we do every month (sent to [our subscribers](#)). You can see some of the results in Figures 1 and 2. We also asked an open-ended question about your "largest issues" with data. Your answers seemed to revolve around the accuracy of data collected (and whether it is the right data), lack of time, collecting in real-time, and then how to organize and analyze what has been collected.

Figure 1: What data is most important to you?











			Response Percent	
1	Sales/marketing data		25.00%	
2	Front end/engineering data		25.00%	
3	Data from manufacturing processes		40.91%	
4	Inspection data		2.27%	
5	Other (please specify):		6.82%	
Other (please specify): (3)				

Figure 2: How do you identify the data you need to manufacture your products?

			Response Percent	
1	Value Stream mapping		27.27%	
2	Low yield or out-of-control process(es)		27.27%	
3	Advice of supervisor in area		15.91%	
4	Advice of consultant or other		13.64%	
5	Other (please specify):		15.91%	

A new set of rules for PCB production



Less process steps. CAM to etch in minutes instead of hours.
Maximum yield. Minimal environmental impact. These are just a few
of the PCB production rules that Lunaris has redefined.

We've put together a complete set of all the new rules
made possible by Lunaris ...get yours today!

Download all the new rules:
The Official Lunaris Rulebook

CLICK HERE TO DOWNLOAD



mutracx
THE BETTER WAY

www.mutracx.com

DATA, DATA AND MORE DATA!



We also asked how you turn data into useful and right action. Most of these answers were a little vague, suggesting that many of you aren't quite sure what to do with the data you collect. And some of you mentioned, "Too much data!"

To help you with your data and IoT issues, we've got some great articles for you this month. Jason Marsh of Insulectro starts us off with the big picture, or as he calls it, the 50,000-foot view of the Internet of Things. He not only presents it in a very readable way, he succeeds in bringing IoT home and explains what it means to the PCB industry (good things!). This will get you charged up.

Next, Steve Williams gets down to brass tacks with regard to analyzing data. He explains statistical methods, and why you should use them. He gets right in the trenches with you and makes it easy to understand.

Dave Becker of All Flex gets right to the practical side of things with a discussion of wet process control in a PCB facility, including the most important parameters to be measuring and controlling.

In some areas, though, identifying which data to collect is not as obvious. If this has

you a little baffled, be sure to read Dave Dibble's commentary on what and how to measure, followed by some advice on what to do with your results.

Now, because some of you have been asking for more technical articles, I am pleased to offer several in this issue. Thomas Gottwald and Christian Rösle of Schweizer Electronic AG have written about the challenges of power electronics, from substrate requirements through assembly. They also present some technologies that address these issues.

In his column, Karl Dietz revisits digital imaging—it's not just laser anymore. Then, Dirk Muller of Coherent Inc. provides a detailed overview of the various types of lasers used for making vias and how to decide which one to use.

Finally, we have what may be best described as an article of interest. Doug Bathauer of Integral Technologies talks about disruptive technologies and their effect on companies, using conductive polymers in the automotive industry as his case in point.

Once again, all three of our e-magazines have this same data focus. Do check out the others for more perspectives on this sometimes difficult-to-get-your-arms-around subject: [SMT Magazine](#) and [The PCB Design Magazine](#).

To wrap up the year, in December we will be exploring the nitty-gritty of our industry's associations—IPC, SMTA, IEC, CPCA and a host of others. Be sure to tune back in. I hope by now you have [subscribed](#) so you can get it (and our newsletters) delivered right to your virtual door/mailbox. **PCB**

References

1. Forbes.com



Patricia Goldman is a 30+ year veteran of the PCB industry, with experience in a variety of areas, including R&D of imaging technologies, wet process engineering, and sales and marketing of PWB chemistry. She has worked actively with IPC since 1981 and served as TAEC chairman, and is also the co-author of numerous technical papers. To contact Goldman, [click here](#).

WHEN RELIABILITY IS ESSENTIAL

Arlon's 85NT Laminate and Prepreg



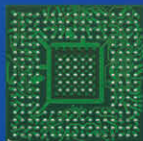
Design with a Winner

That's why Arlon Electronic Materials, worked diligently to maintain the characteristics and performance of its new Arlon 85NT laminate and prepreg, just like the 85NT materials circuit designers have come to know and trust. 85NT delivers high performance and reliability that customers have come to expect.

In addition to being 25% lighter in weight than glass reinforced materials, Arlon's 85NT

maximizes solder joint reliability with low in-plane CTE of 7-9 ppm/°C.

Arlon 85NT is back, with the same stability and reliability that circuit designers have come to know and trust.



Visit www.hi-relmaterials.com to learn more.

ARLON

A division of Rogers Corporation
ARLON-MED.COM • 909.987.9533



What is the Internet of Things and Why Should it Matter to Us?

by Jason Marsh

INSULECTRO

It is often surprising how closely our science fiction novels and movies model the future. The Internet of Things (IoT) and big data may prove to be an excellent example of this phenomenon. Coined in 1999 by Kevin Ashton (the RFID standards pioneer), the IoT is one of the least descriptive monikers of all time for something very important in the history of technology.

At its core, the IoT (or IoE or IoX) is a catch-all grouping for a network of interconnected devices across multiple technologies that span everything from smartphones, to utility systems, medicine, to vehicles—all of which will collect data and communicate with the cloud and with each other to make “intelligent” decisions about their operation within the total context of the network.

Add to this an astounding proliferation of sensors measuring everything from temperature to vibrations, chemicals, and magnetic fields. Drop in some big data analytics, make

the leap from traditional neural nets and genetic algorithms written in LISP or Prolog to more modern programming languages like Python or Haskell, transition to distributed parallel architecture and a bunch of Google programmers lead by Jeff Dean, Geoffrey Hinton and Raymond Kurzweil, and you begin to have something that looks very much like James Cameron’s mythical “Skynet” from the 1984 movie “The Terminator.”

What exactly are these devices that will be connected?

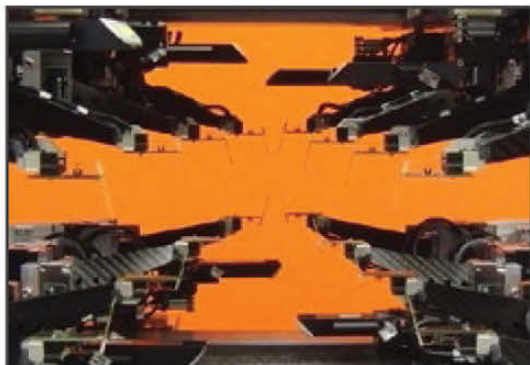
In 2015, with 13.4 billion connected devices, we are close to saturation on human computer interface devices such as tablets, mobile phones and personal computers. The connected device landscape that is being predicted to drive the IoT will see significant growth in other segments which will span everything from medical devices, such as glucose sensors and blood



Unrivalled Speed with Full Automation



Introducing the atg A8-16a with 16 test probes at an unrivalled test speed of up to 250 measurements per second and full “lights out” Automation.



Test area:	610 mm x 620 mm (24.0" x 24.4")
Number of test heads:	16 (8 top + 8 bottom side)
Smallest pad / pitch :	35 μ m (1.4 mil) / 80 μ m (3.2mil)
Test voltage:	Up to 1000V
Max. measurements / minute:	Up to 15000 measurements /min. *
Loading capacity:	390 mm , max. 80 kg weight
Max board weight:	20 lbs
Marking option:	Barcode label

Get more info



Please visit us at
productronica 2015
Hall B1 Booth 338

atg Luther & Maelzer GmbH

Zum Schlag 3 • 97877 Wertheim • Germany
Phone +49-9342-291-0 • Fax +49-9342-395 10
sales@atg-lm.com • www.atg-lm.com



WHAT IS THE INTERNET OF THINGS AND WHY SHOULD IT MATTER TO US?



Figure 1: A wireless blood glucose monitoring design that connects to the cloud. (Source: Journal of Diabetes Science and Technology)



Figure 2: Semios orchard monitoring system has sensors which measure frost, leaf-wetness, soil moisture, and pest pressure and uploads that data to the cloud.

oxygen monitors (Figure 1), to wearables (Fit-bit, Apple watch), to home automation (Nest thermostats or Kwikset Kevo Bluetooth locks), to self-driving vehicles (Google car, Delphi car) and even agriculture technologies (Semios [Figure 2]).

Each of these devices will collect significant data and then upload it to the cloud in either raw or semi-processed format where analysis will be done and machines will make decisions based on the results and alert users, make automated adjustments, or communicate with other machines to react to the conditions. Understandably, much of the press surrounds consumer devices, however Sam Smith at Juniper Research indicates that, “While IoT ‘smart home’ based applications grab media headlines, it is the industrial and public services sector—such as retail, agriculture, smart buildings and smart grid applications—that will form the majority of the device base.”

There are also varying degrees of adoption. Countries like South Korea and Denmark lead the field with the largest number of connected devices, with 37.9 and 32.7 per 100 residents, respectively. The United States by comparison is at a level of 24.9 connected devices per 100 residents. All together, it is anticipated there will be nearly 40 billion connected devices by 2020. Flavio Bonami, former Cisco Fellow and co-lead

of its IOT initiative explains that “the Economic Impact of the Internet of Things is forecasted by Cisco to grow by \$19 trillion between 2014 and 2020.”

One key to this is the adoption of the IPv6 device addressing protocol. IPv4 (the current standard, ex: 66.147.252.109) allows for about 4.3 billion addresses. In June of this year, John Curran, CEO of the American Registry for Internet Numbers (ARIN), told attendees at a conference in Boston that the “ARIN’s IPv4 Address pool has dwindled to 90,000 and [would] be exhausted within two weeks.” He urged IT professionals from educational institutions to “upgrade their public facing websites to IPv6 as soon as possible.” IPv6 by contrast, will facilitate unique addressing for 4.3×10^{38} devices (ex: 2600:1404:17:18b::19ff).

Where will this \$19 trillion come from?

There are three basic categories of things that promise to undergo a significant amount of growth as a result of this IoT trend:

1) Sensors and edge devices: These devices will include sensors using Silicon ICs, MEMS technology (Figure 3), printed electronics, traditional circuit boards, and even organic biological sensors. These will include almost anything you can think of, from biometrics

WHAT IS THE INTERNET OF THINGS AND WHY SHOULD IT MATTER TO US?

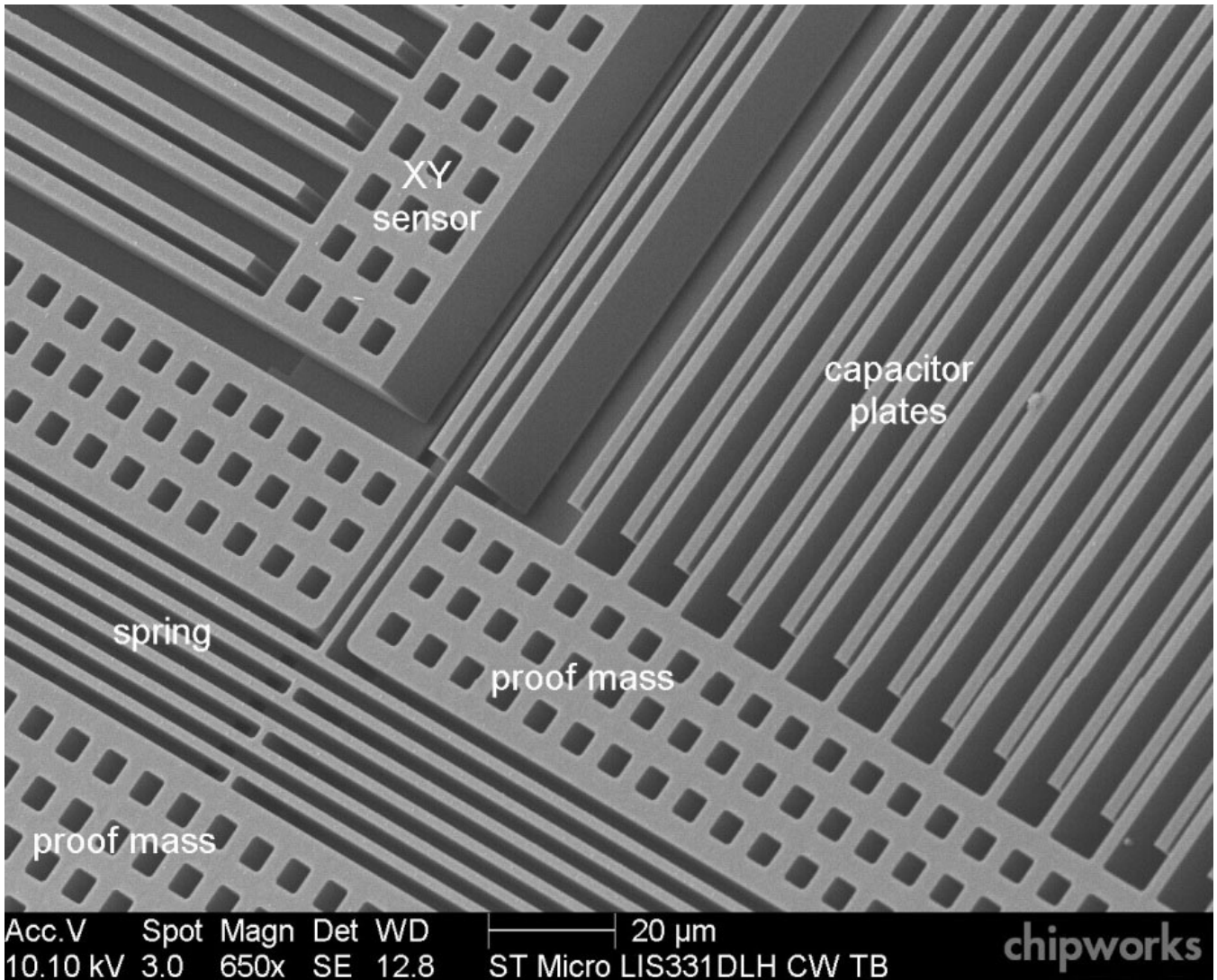


Figure 3: MEMS accelerometer inside iPhone that detects vibration and orientation and can be accessed by app programmers to measure other physical events. (Source: Chipworks)

for security and health monitoring, container tracking for shipments, weather and earthquake monitoring, and even food storage and temperature history for wine or vegetables (Figure 4).

2) Wireless communication protocols:

It would be far too cumbersome to wire all these products to the grid so an avalanche of new, low power wireless protocols will be launched. Dr. Kris Pister, founder of Dust Networks explained in a presentation last year in San Diego that Linear Technology and Intel are already shipping IPv6 wireless evaluation kits under the Dust Networks and Edison brands respec-



Figure 4: Thinfilm ASA's smart label which stores temperature history of a vegetable package using printed electronics technology.

WHAT IS THE INTERNET OF THINGS AND WHY SHOULD IT MATTER TO US?

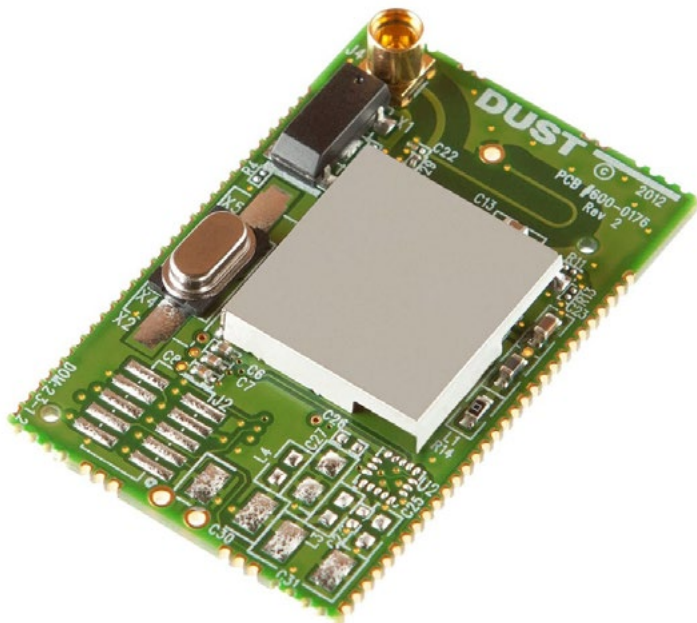


Figure 5: Dust Networks' Eterna™ 802.15.4 SoC system that communicated wirelessly and can be powered by harvested energy.

tively. Groups such as Wireless HART, IETF, ISA and WINA have been hard at work helping to drive standards and ensure interoperability of these low-power wireless sensor networks, some of which can function on minute amounts of energy harvested from their environment (Figure 5). These local networks will in turn interact with the Internet backbone through WiFi, GPRS, LTE and other existing infrastructure protocols driving buildout of base station transceivers and progress towards the adoption of higher data rate solutions like 5G which was developed under a NASA and M2Mi (Machine-to-Machine Intelligence Corp) cooperation beginning in 2008.

2) Data storage and networking infrastructure: There are two approaches which will likely prove to be not exclusionary but rather complementary. "Fog computing" in which edge devices (our phones and the LTE network are a good example of this) do a significant amount of computation on board and only send resultant data back to centralized data centers. The other side is cloud computing, whereby all the data (much of it raw and

unprocessed) will travel over the Internet backbone to data centers where it will be stored and analyzed. The question as to how much of each will handle what types of data is the subject of frequent debate. The drawback to fog computing centers on accuracy, security and interoperability. In contrast, the cloud computing side will suffer from latency, expensive infrastructure and an absurd number of startups that struggle to articulate what their actual product is. Regardless of the protocols or the division between Fog and Cloud, a significant increase in back-end data storage and network speed is a foregone conclusion. As a result, IEEE has released its 802.3bj standard which provides for 100 Gb/s data rates in four parallel channels of 25 Gb/s, and has been working on the next generation of 32 Gb/s channels, to be followed by 56 Gb/s and later 112 Gb/s.

How much data are we talking about?

As of 2015, Cisco believes that only about 1% of physical things or systems are connected to the Internet. To get an idea of how much data we are talking about at the 2020 milestone, we will use the example of self-driving cars. The reason many self-driving cars are built using SUVs or station wagons is to hold a significant amount of computing capacity to process all the data which the network of GPS, Lidar, cameras and radar sensors inputs. The Continental self-driving car prototype operates a 24-computer linux cluster in the trunk to process this data. IWPC (the wireless industry consortium) calculates that communication needs for these vehicles currently exceeds the data capacity of 10 MB/s Ethernet. This means a typical drive from San Francisco to Los Angeles, which is 420 miles, would create (conservatively) about 45 GB of stored data. Consider an estimated 1.2 billion cars on the road globally and 84 million new cars which were sold in 2014 and then each of those driving an average of about 19,000 miles per year, the amount of generated data is simply astronomical.

How will all the data be handled?

There is no doubt that these speeds are challenging nearly every aspect of traditional PCB construction and materials. A significant

MAGNA SERIES

THE NEXT GENERATION IN PCB ETCHING

MAGNA

72"

96"



MAGNA FEATURES

- No CF4 for Operation
- Lower Power Requirements
- Faster Etch Times
- Incredible Process Uniformity
- Lower Operating Costs
- PC Control with Touch Screen

The Magna Series is the world's first plasma etching system used in the manufacturing production of PCBs that requires no CF4. This new technology from Plasma Etch, Inc. completely eliminates the need for CF4 gas that is presently used by PCB manufacturers using plasma systems for desmear and etch back processing.



PLASMA ETCH
PROGRESS THROUGH INNOVATION

3522 ARROWHEAD DRIVE
CARSON CITY, NV 89706

775.883.1336

WWW.PLASMAETCH.COM



WHAT IS THE INTERNET OF THINGS AND WHY SHOULD IT MATTER TO US?

amount of borrowing of technology and test methods from the RF and analog world is making its way into the digital design realm. Semico Research hosted an exchange on Oct 13 between the silicon and the bare-board industries, discussing how technologists can get to data speeds of 56 GB/s per channel with a 112 GB/s strategy expected to follow. Signal integrity experts such as Lee Ritchey of Speeding Edge, Scott McMorrow of Samtech, and Heidi Barnes of Keysight focused on the physics challenges of pushing copper and PCB production technologies to these speeds. Michael Gay of Isola explained the manufacturing methods of base materials and how Isola will provide next generation materials to meet these design needs.

The collaboration with the silicon designers helps everyone understand what is important to each group in order to realize these speeds in the entire chip-to-chip signal chain (chip-package-interposer-linecard-connector-backplane-return). In some cases, chip designers have the silicon space on the ASIC to build pre-compensation or eye-opener circuits in the die. However, for most applications, these speeds will

mean increasingly tight signal integrity budgets on the circuit boards. This means that low loss and skew mitigation materials are very important. The next generation of designs will likely require highly specialized materials, and very well-controlled PCB manufacturing processes. This effort will necessitate collaboration, communication and cooperation between fabricators, designers, materials manufacturers and OEMs on an unprecedented scale.

What does all this have to do with my bottom line?

The IoT roadmap, if realized, means a significant amount of growth in all segments of the North American PCB market.

First, there will be a significant development in ASICs, FBGAs and other silicon products that will require burn-in boards and automated test equipment boards (Figure 6). Companies like Gorilla Circuits, TTM, Sanmina and Multitest will be seeing good opportunities in this business supporting companies like Qualcomm, Xilinx and Altera, as well as numerous Semiconductor OSATs (outsourced semiconductor and test) who will be building ASICs and packaging for a new generation of IoT oriented fabless semiconductor players.

Second, there will be the edge devices in both the PCB and printed electronics space. This will mean a significant number of prototypes of new technology systems for shops like Flex Interconnect, Lenthor Engineering and Protech. These will include prototypes for the household name mobile phone and tablet makers as well as a litany of new companies, some of them well-funded startups, making novel sensor packages in spaces like medical, wearables and home automation. The Flexible

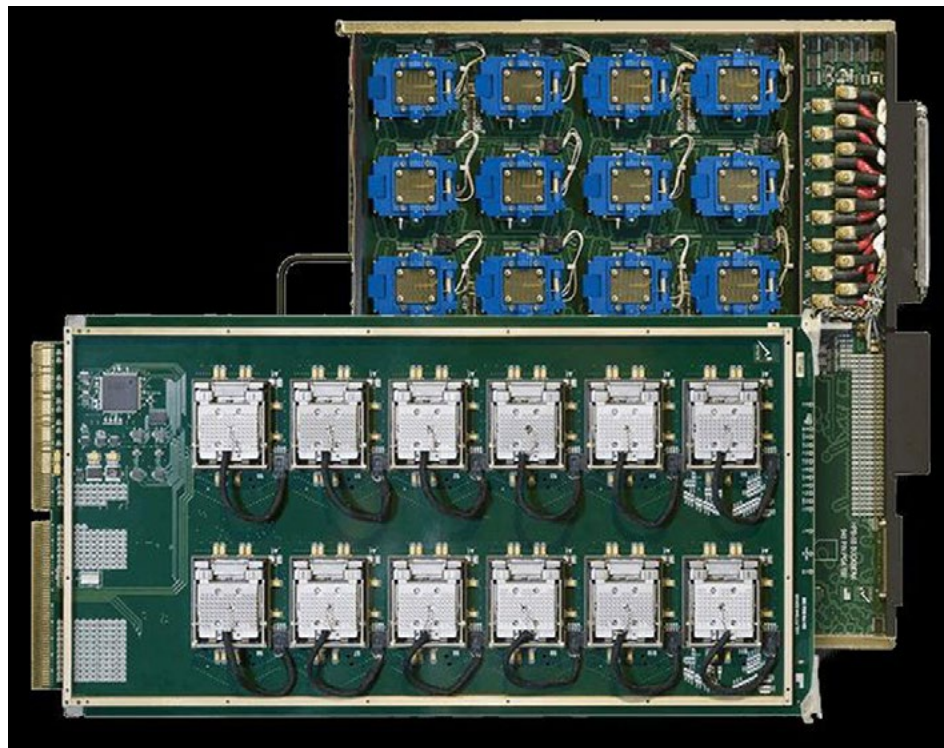


Figure 6: A burn-in board for ASICs. (Source: Micro Control Company)



PRODUCTRONICA 2015

COME SEE US: HALL B1, STAND 245!



- ✓ INKJET
- ✓ DIRECT IMAGING SOLDER MASK
- ✓ VIA FILL
- ✓ FLEX SOLDER MASK
- ✓ LED SERIES
- ✓ SPECIALTY PERFORMANCE SOLDER MASK



Phone [775] 885-9959 • www.taiyo-america.com • info@taiyo-america.com



WHAT IS THE INTERNET OF THINGS AND WHY SHOULD IT MATTER TO US?

Hybrid Electronics Manufacturing Innovation Institute in San Jose California, a project for IPC's Government Relations Committee, was announced in September and will receive \$75 million in funding from the U.S. DoD and will be overseen by the Flex Tech Alliance, as a consortium of 96 companies, 11 laboratories and non-profits, 42 universities, and 14 state and regional organizations. The FHEMII will develop next generation materials and manufacturing methods for flexible electronics.

Innovation in novel materials such as graphene and PEDOT will create new devices that

are not possible today. Materials science heavyweights such as DuPont are already working on materials to make next generation high-speed flexible circuits, high-temperature circuits' materials and even copper-based inks to print antennas for these next generation designs (Figure 7).

Then there is the Internet backbone that will drive a significant share of the investment. OEMs like Cisco, Juniper, Alcatel-Lucent, Ciena, Brocade and HP will pave the way for more telecom infrastructure with ultra-high-speed backplane and daughter card systems. Cisco maintains a team of industry experts to test and characterize materials and manufacturing methods to achieve these next generation speeds. Team members like Scott Hinaga work diligently to devise new test methods and construction strategies to characterize materials that will allow copper circuits to push the physics envelope and maintain digital reliability up to 56 Gb/s per channel.

The fabricators who will see growth in this segment will include companies like TTM, Sanmina, WUS, Gold Circuits, ISU Petasys and Amphenol. Those who will truly stand out, will

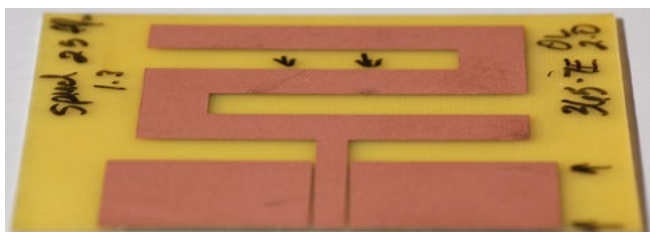
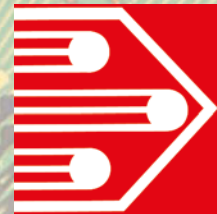


Figure 7: RF antennae printed with DuPont's copper ink.



Figure 8: Open Compute server in a Facebook data center.

Photoplotters Ink Jet Printers Direct Imager



productronica 2015
messe münchen november 10 - 13, 2015

Meet us ! On our Booth 524 Hall B1

Full data compatibility

- **Data input formats** RS274D, RS274X, DPF and EIE RPL
- **Extensive other formats** DXF, DWG, other upon request
- **Optional input formats** ODB++, PostScript, TIFF-PACKBITS
- **Network compatibility** TCP-IP

Dynamic Information Generator

Serial numbers, time-code, barcodes 1D or 2D (QR-Code, DataMatrix and others) by simple D-Code mapping. No operator intervention.



Photoplotters



**Accuracy
Reliability**

Maximum films size from 20" x 26" to 34" x 56"

Ink Jet Printers



Operator-Friendly

CP562
Panels size up to 24" x 26"

IMH512

Printing Head

Robust
Less clogging
75 microns legend line

- **Flex material compatibility**
- **Unique elevation table**
- **White/Black inks**

- **Resolution**
4 000 dpi from to 50 000 dpi
- **Low drum speed**
max 130 rpm
No vibrations
No film distortion
No film fly off
- **Full automation**
Short loading
Unloading Time

Direct Imager

Cost-Effective



EDI500
Panels size up to 24" x 26"

DMD Technology with First EIE UV Optical Engine

- **Broad UV spectrum**, from 365 nm to 450 nm
- **4 to 450 mJ/cm²**
- **Etch Resists**
- **Solder Masks**
- **Full auto scaling**
- **versatile**

**Sales and service for
CANADA and USA**



Global Machine and Maintenance
Cell : +1 215 356 3077
cspitko@gmail.com
www.globalmachine.co

sales@FirstEIE.com • www.FirstEIE.com



The True Figures

WHAT IS THE INTERNET OF THINGS AND WHY SHOULD IT MATTER TO US?

		
ESTABLISHED	September 4, 1998	August 4, 1997
ORIGIN	California	California
CREATED	The strategy behind Google's creation was to remove the possibility of human error and slow reaction time to guarantee fast, efficient responses to search queries	The strategy behind Skynet creation was to remove the possibility of human error and slow reaction time to guarantee fast, efficient response to enemy attack

Figure 9: Excerpt from Google vs. Skynet cartoon.

be innovators like Amphenol Printed Circuits, led by Pam Simonds and Christine Harrington, who are collaborating with materials suppliers to design next generation systems and patented technology for high-speed data rates, as well as taking a disruptive look at traditional industries like commercial aviation where they share a passionate vision around the possibility to improve safety through the adoption of high-reliability PCBs.

Projects like Open Compute provide an open source platform for “vanity-free” servers (Figure 8) that will be embraced by companies like Facebook and Microsoft who see their software and not their hardware as the competitive advantage.

All of these segments will come together to create the unique vision of the IoT. The aggregate data that is collected through the IoT will allow analytics, correlations and understanding of things that today stand in the unexplainable column.

Knowing all this, should I be worried about Skynet and the end of the human race?

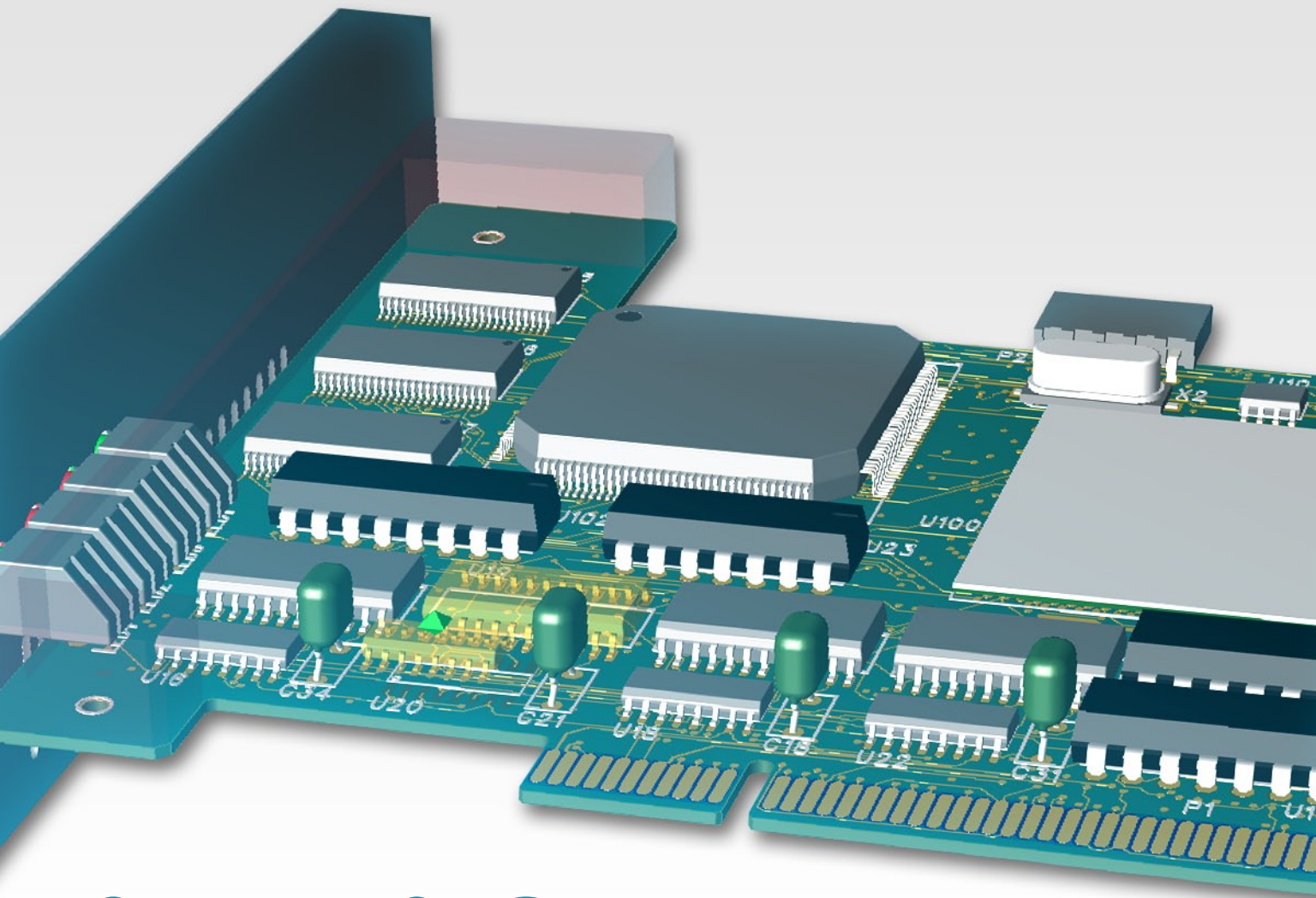
The answer to that question is, a little. Noted futurist Raymond Kurzweil, who is now funded by Google to implement his vision, de-

scribes his law of accelerating returns, which predicts an exponential increase in technologies like computers, genetics, nanotechnology, robotics and artificial intelligence. Kurzweil believes this will lead to a technological singularity in the year 2045, a point where progress is so rapid it outstrips humans’ ability to comprehend it. Once the Singularity has been reached, Kurzweil says that machine intelligence will be infinitely more powerful than all human intelligence combined.

So, has Google become Skynet (Figure 9)? At least in the near term, we can seek comfort in the fact that Google has an unofficial motto of “Don’t be evil” in everything they do. This should guide them not to become Skynet. That, of course, presupposes that humans are still in charge in the data centers. In the meantime, we will have a lot of circuit boards to build and technology challenges to overcome in order to get there. **PCB**



Jason Marsh is vice president of product management at Insulectro.



3D DESIGN

More than just a pretty picture

Tackle simple or complex PCB design problems with accuracy and ease. PADS® delivers great value with constraint management, best-in-class simulation and analysis, and powerful interactive and automatic routing. New 3D design with STEP import/export provides a virtual prototype of your electronic assembly. 3D editing with DRC makes the layout process quick and efficient.

Find out more at
www.pads.com





Data Analytics through Statistical Techniques

by Steve Williams

THE RIGHT APPROACH CONSULTING

Introduction

Many companies get caught in data traps. They focus so heavily on cost and survival that they end up using data as merely a marketing and sales tool. In doing so, they fail to realize the true power of data: It can transform every aspect of a business.

Survey Says...

A recent survey by I-Connect007 revealed just how important data is to our industry, and also just how difficult it is to get accurate, actionable data to drive our businesses. The key takeaway from printed circuit executives was that their greatest need is accurate, real-time process data. When you apply process metrics and dashboards to your data tools, data not only drives improvement, it can drive innovation. Companies struggle with data: how to get it, is it the right data, is it accurate, and is it an automated or manual process? This is where using statistical analytics can help any company

to improve their business, and not just in manufacturing but also in areas like your customer and employee hiring processes.

Data should never be pigeonholed or feared. Instead, it should be used to better understand your company. By breaking down the silos that exist within your organization you will generate new perspectives, ideas and performance levels as departments begin to measure their performance against the new metrics. Did you just realize that your company has fallen into a data trap? Luckily, it's easy to break free from its chains, and using statistical data will reveal just how efficient and innovative your business can be.

Why Statistics?

A customer has an expectation of consistency in product quality, delivered on time, and at a fair and competitive price. A business owner has an expectation of making a profit through satisfied customers. A properly implemented SPC program can dramatically increase the degree of success in meeting these synergistic expectations.



Copper migration giving you CAF headaches?

LCOA's revolutionary lubricated
backup material reduces
destructive heat caused by drilling
that leads to CAF issues.

SLICKBACK[®]

Lubricated Drill Backup

Extended Tool Life

Increased Throughput

Increased Stack Height

plus, Reduces Drill Heat

Best Hole Quality

L.C.O.A.[®]
LAMINATING COMPANY OF AMERICA

DATA ANALYTICS THROUGH STATISTICAL TECHNIQUES

Companies tend to be extremely protective when it comes to sharing their dirty laundry with customers, with the “unenlightened” being the most resistant. Statistically-challenged companies have argued everything from a flat-out “We don’t believe in SPC,” to “Our customer return rate is very low, so why do we need SPC?” The answer is really quite simple: In addition to the performance-related issues that reach a customer, like late delivery and defective product, the cost of inefficiencies in any

.....

“The answer is really quite simple: In addition to the performance-related issues that reach a customer, like late delivery and defective product, the cost of inefficiencies in any process are directly passed along to the customer in some form.”

.....

process are directly passed along to the customer in some form. Scrap (or overrun to cover anticipated scrap), rework and inefficient processing are factored into the pricing model, so the lower the efficiency, the higher the total cost to the customer. And as we all know, “It’s always about the dollars.”

Early in my career, a wise old mentor told me, “Steve, never argue about what can be measured.” Being an engineer by trade and German by lineage, he knew a little about precision craftsmanship. This advice has stuck with me, and in the quest for continuous improvement has translated into “How can we get better if we don’t know where we are now?” followed by “How can we know where we are now without metrics?” An effective SPC program should be a key metric of continuous improvement and a valuable management information system.

No Fear

The great statistical myth is that SPC is another big scary concept that can only be successful in companies that have dedicated quality engineers devoted to this complicated discipline. The biggest reason for the perpetuation of this myth is a lack of understanding of basic statistical principles, which results in the tendency to focus on the math and not the benefits. I will break down the basic principles into simple, everyday concepts that will allow you to see the SPC “big picture” and focus on the continuous process improvement aspect. The math is the easy part of SPC due to the abundance of inexpensive statistical software available to do the number-crunching heavy lifting. Instead, I would challenge you to concentrate on the theory, benefits and practical application of statistical tools as a path to SPC without tears.

From a fundamental standpoint, SPC is simply “making sense of experience,” and the skill-set needed is one that has already been honed over the course of your normal day-to-day activities. For example, this summer my wife and I were driving past a corn field when she observed, “There must have been a lot of rain here this summer because the corn is higher than normal for this time of year.” What my wife had just done was make a subconscious statistical comparison of a current data set (this summer’s corn crop) to a historical data set (past summer’s corn crops), and formed an educated guess as to the cause for the difference (excessive rain). From a conceptual viewpoint, statistics are no more difficult than this.

Identify Critical Processes to Avoid Useless Data

A common mistake many companies make is to try to statistically monitor and control every single variable in every one of their processes. Show me a company that proudly boasts that they have 127 control charts in their SPC program and I will show you a company that just doesn’t get it. Customers do not want to see wallpaper; that many processes cannot possibly be controlled and managed properly, nor should they need to be. Use the technical resources at your suppliers to help determine the specific critical aspects of the process that

DATA ANALYTICS THROUGH STATISTICAL TECHNIQUES

should be controlled. They can also be instrumental in determining the appropriate process specification limits; for example, a chemical supplier should know the optimum operating parameters for the product they are supplying. Again, and I can't say this enough, customers want to see the processes controlled that you have deemed critical to your business; no one else can make that determination for you.

Variation

The one constant about any process is that there is inherent variation within it; in other words, variation is a given. No two things are exactly alike, and our personal experience proves this out on a daily basis. We often use the expression "Like two peas in a pod" to describe two things that, on the surface, appear to be the same. But if we took this literally and opened the pod, close examination would find differences in the size, shape, color, texture and blemishes of the two peas. Now the critical aspect of this is "Does this variation really matter?" If the only requirement is tasty peas, then this variation absolutely does not matter.

Although no two things are exactly alike, when talking about a process the goal should be to reduce the amount of variation between parts as much as possible. To do this, it is important to understand the difference between the two causes of variation; common and special.

Common Cause: Also called random or normal, this variation is inherent in the process, affects every part, is repeatable, and most importantly, is predictable. Common cause variation is created by many factors that are part of the process and are acting totally at random and independent of each other. Their origin can usually be traced to the key elements of the system within which the process operates (materials, equipment, people, environment, methods). If only common causes of variations are present, the output of the process forms a distribution that is stable over time. An example of common cause variation would be the amount of time it takes you to drive to work. Taking the same route every day, there would be variations in time that are due to which stop lights you make or miss, minor traffic fluctuations, and how closely you follow the speed limit.

Special Cause: Also called assignable, these causes of variation are not a normal part of the process, does not affect every part, and can be identified to a specific, special cause. It means that something about the process has changed and has been created by a non-random event leading to an unexpected change in the process output. The effects are intermittent and unpredictable, and thus dangerous. If special causes of variation are present, the process output is not stable over time and is not predictable. Using the above example, a special cause would be a weather-related delay on the drive to work.

Control vs. Capability

The word "control" often has a negative connotation surrounding it, which in some usages is well deserved. However, from a statistical standpoint, control refers to the consistency of a process; the ability to produce repeatable product within certain predetermined limits. As we learned above, all processes have variability, and a process is deemed to be "in statistical control"

“ The word “control” often has a negative connotation surrounding it, which in some usages is well deserved. ”

when it is affected only by common cause variation. In contrast, capability refers to the ability of a process to produce output that meets specifications, in other words, shippable parts. There are various levels of capability which we will discuss a bit later, but in general a process is said to be capable if nearly 100% of the output from the process is within the specifications. The goal of statistical process control is to develop a process that is both in control and capable.

A key point that may often be hard to understand is that a process can be statistically in control but not capable. This means that the normal variation in the process will not allow

DATA ANALYTICS THROUGH STATISTICAL TECHNIQUES

the process to repeatedly and reliably meet the product specifications (Figure 1). In this situation, you would need to take steps to improve or redesign the process. If this cannot be done, the only remaining solution would be to present your capability study (more on capability studies later) to the customer, quantitatively demonstrating that their specifications are outside of the current process capabilities and request a specification adjustment based on your study.

It is important to note here that creatively expanding the specification limits to artificially improve the capability numbers will not only fool no one, but will also not provide any true capability improvement.

For a process to be both in control and capable, the process must meet the following criteria:

- Must remain stable over time
- Must operate in a stable and consistent manner (in control)
- Must be set at the proper level (centered)
- The natural process variation must not exceed the product's specified tolerance (capable)

Data Collection, Sample Size & Pre-Control

Once the processes, and aspects for each that need to be controlled, have been established, the next step is to begin your data collection phase. One very successful data collection strategy is to take five measurements per day, which will be then be averaged. A standard SPC control chart can be modified to use during the data collection phase, as long as it is clearly labeled as "Data Collection" and not "SPC."

A better choice may be to use a tool that is called a pre-control chart. A pre-control chart is a "visual process stoplight" and an excellent precursor to a full-blown SPC control chart. Pre-control is effective because it uses (stoplight) color-coded zones (green, yellow, and red) to make control chart interpretation very easy for operators. Pre-control limits are established based on the following and again, by collaborating with your key suppliers:

1. The middle 50% of the chart is the green zone, which makes up 50% of the specification tolerance for the feature being measured.

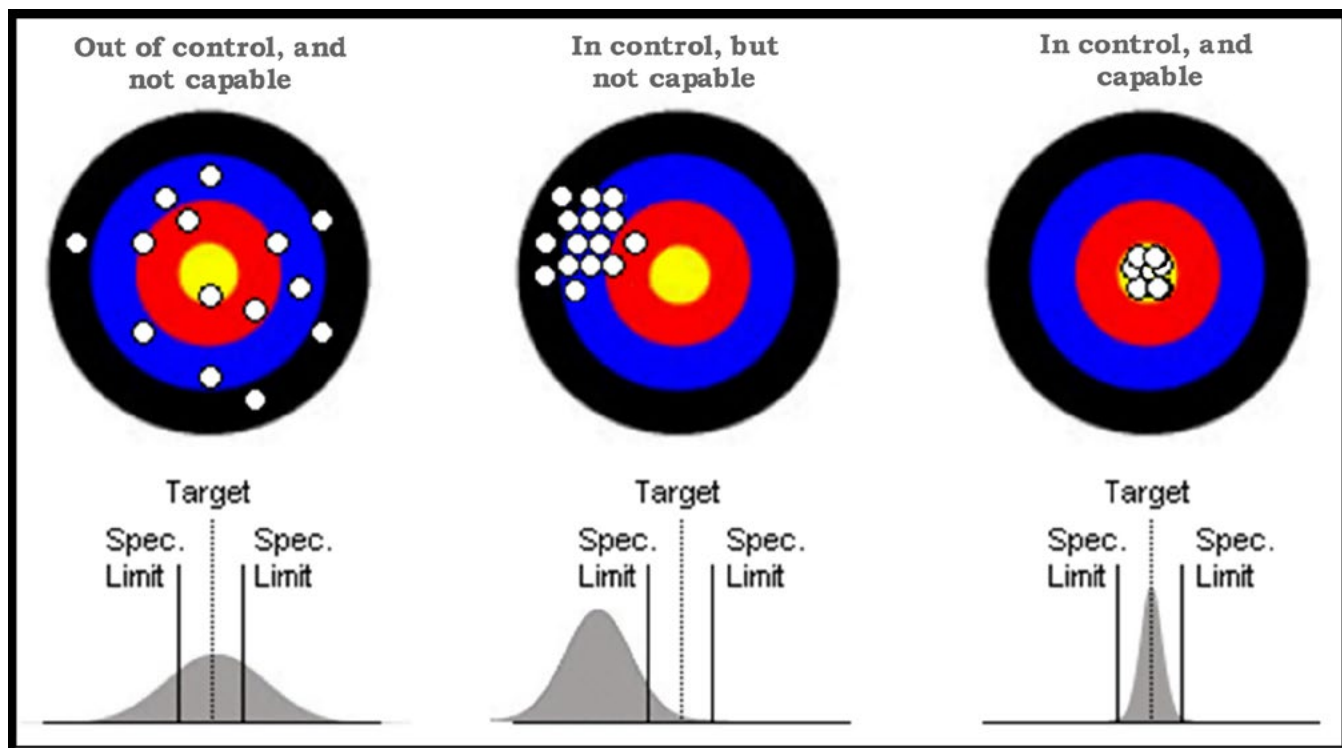
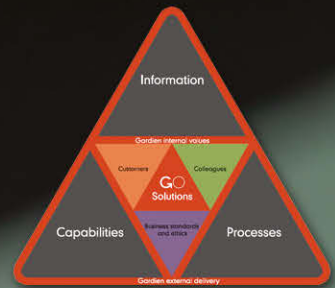


Figure 1: Control versus capability.



Building HDI Fixtures with Test Pins Smaller than a Human Hair

Electrical Testing
Fixturing
4WK, Hi-Pot, Impedance Testing
CAM and CAD Services
Final Visual Inspection
Automatic Optical Inspection
Automatic Visual Inspection
Equipment Sales and Service
Consulting

Global Quality Assurance Solutions
tailored to your individual needs

GOTM
Gardien



productronica 2015 - Come put our experts to the test.
Hall A1, Booth 434 at Productronica, November 10-13, 2015.

DATA ANALYTICS THROUGH STATISTICAL TECHNIQUES

2. The yellow zone on either side of the green zone makes up the remaining 50% of the specification tolerance (25% for each yellow zone)
3. The red zone is everything outside of the specification limits; in other words, the zone where you are making bad parts.

Control Charts

The minimum number of samples needed to be able to perform any meaningful statistical analysis is 30, which per the above sample size methodology would be 30 days of data collection and pre-control. That being said, it is important to note that the more data available to analyze, the more accurate a picture of the process you will get. However, this needs to be balanced with real world expectations to avoid Paralysis by Analysis. The length of data collection will depend on the specific process and out of the box stability, but a 30-90-day duration is reasonable.

“The length of data collection will depend on the specific process and out of the box stability, but a 30-90-day duration is reasonable.”

After the data collection period, if the pre-control results appear to be able to stay within the green and yellow zones, the next step is to move the process into the control chart phase. Control charts are a graphical representation of the current state of a process, and should be implemented at the operator level to maximize effectiveness. A control chart's true function is to provide real-time feedback to control and improve a process, which means that the data displayed on the charts must help front-line operators make better process decisions.

All control charts have three basic components: 1) a process center, or mean; 2) an up-

per and lower control limit; and 3) an upper and lower specification limit. Data between the control limits and the specification limits signal that a process adjustment is needed. Data exceeding the specification limits would be considered out of acceptable limits and defective. The most common form of control charts is the X-Bar and R chart. X-Bar refers to the average of the data in each sample and plotted in the top half of the chart. “R” stands for the range of the data in each sample and is plotted in the bottom half of the chart. The range of the data sample is simply the difference between the highest and lowest value in the sample of five.

Normal Distribution

In a stable process, data will be randomly centered on the process mean and contained within the control limits. This is called a normal distribution, or bell-shaped curve, and is probably the most recognized and most widely-used statistical distribution. The reason for this is that many physical, biological, and social parameters obey the normal distribution, and thus are said to behave normally. When data takes on a normal distribution, it simply means that most of the data will fall around the center, or mean, and that the remaining data will fall progressively farther from the mean with decreasing frequency.

Cpk Analysis

Every product has an optimum value, and because every process has variation, it also has a tolerance. This is defined as specification limits, with both an upper and lower spec limit (USL, LSL) surrounding the optimum value. To review, when a product or process is outside of either of these spec limits, bad product is being produced. How well the process variation is centered on the mean and contained within these spec limits is called process capability. The relationship of this variation to the mean and spec limits is the process capability, or Cpk. The less variation in a process, and the closer the variation is to the mean, the higher the Cpk number.

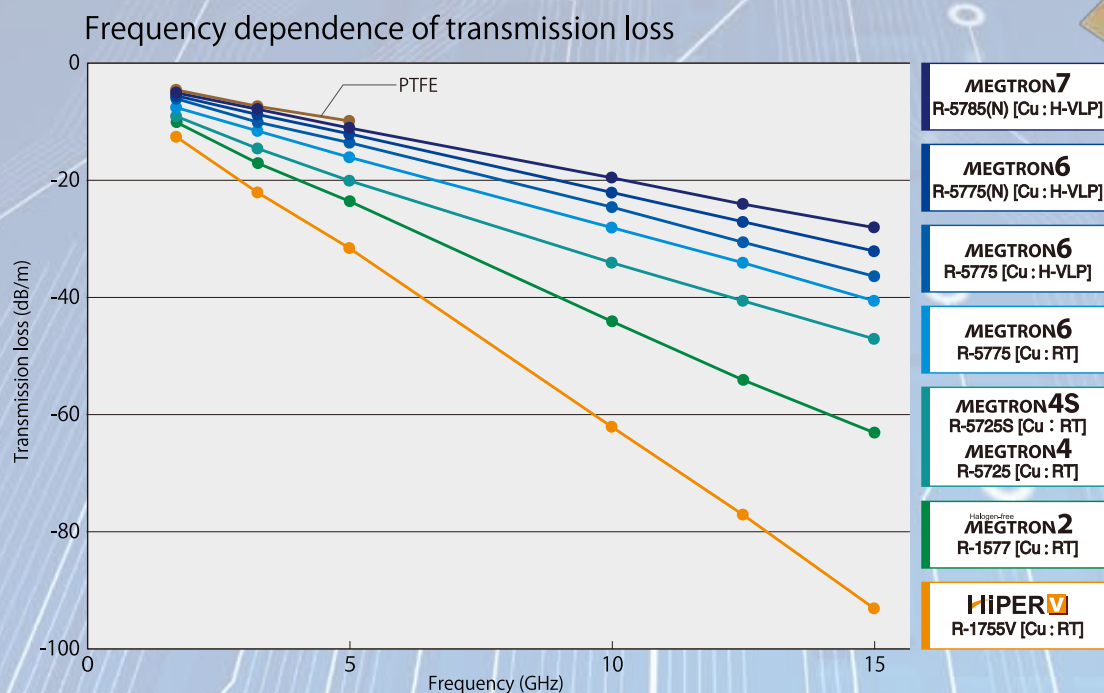
Again, with all the statistical tools available, the formula is not important for this purpose, but what is important is recognizing what this

Panasonic

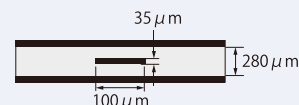
For ICT infrastructure equipment

Low transmission loss
Multi-layer circuit board materials

MEGTRON series



● Evaluation sample



Core	0.13mm
Prepreg	0.06mm×2ply
Length	1m
Cu thickness	t=35 μm
Impedance	50Ω

Electronic Materials website *Relaunched!!*
Please visit our website for more detail.



Contact us



More information

industrial.panasonic.com/www/electronic-materials

Partnering to go beyond.

Electronic Materials
Panasonic Corporation

DATA ANALYTICS THROUGH STATISTICAL TECHNIQUES

number means. It is generally accepted that a Cpk of less than 1.33 would indicate a process that is not capable of consistently meeting customer requirements, and a Cpk of 2.0 would represent a six sigma level. Calculating process Cpk levels is not a one-time occurrence, it must be performed on a regular basis (quarterly is usually sufficient).

Capability Studies

The capability of the process needs to be established to use as a baseline for future improvement comparison, and is accomplished through Cpk analysis. As discussed earlier, a Cpk value is an index representing the ability, or capability,

of the process to meet customer requirements. To determine process capability, collect process data as you would if you were setting up a control chart, calculate the process mean and variation, and then compare the relationship between these values and the specification limits. Any SPC software, or even Excel, can calculate the Cpk of a process data set. Figure 2 shows the various levels of process capability.

Once the baseline capability study has been completed, a final study should be performed again to verify the effectiveness of the process improvements that may have been implemented to improve the process capability. As mentioned earlier, using a minimum Cpk of 1.33 is

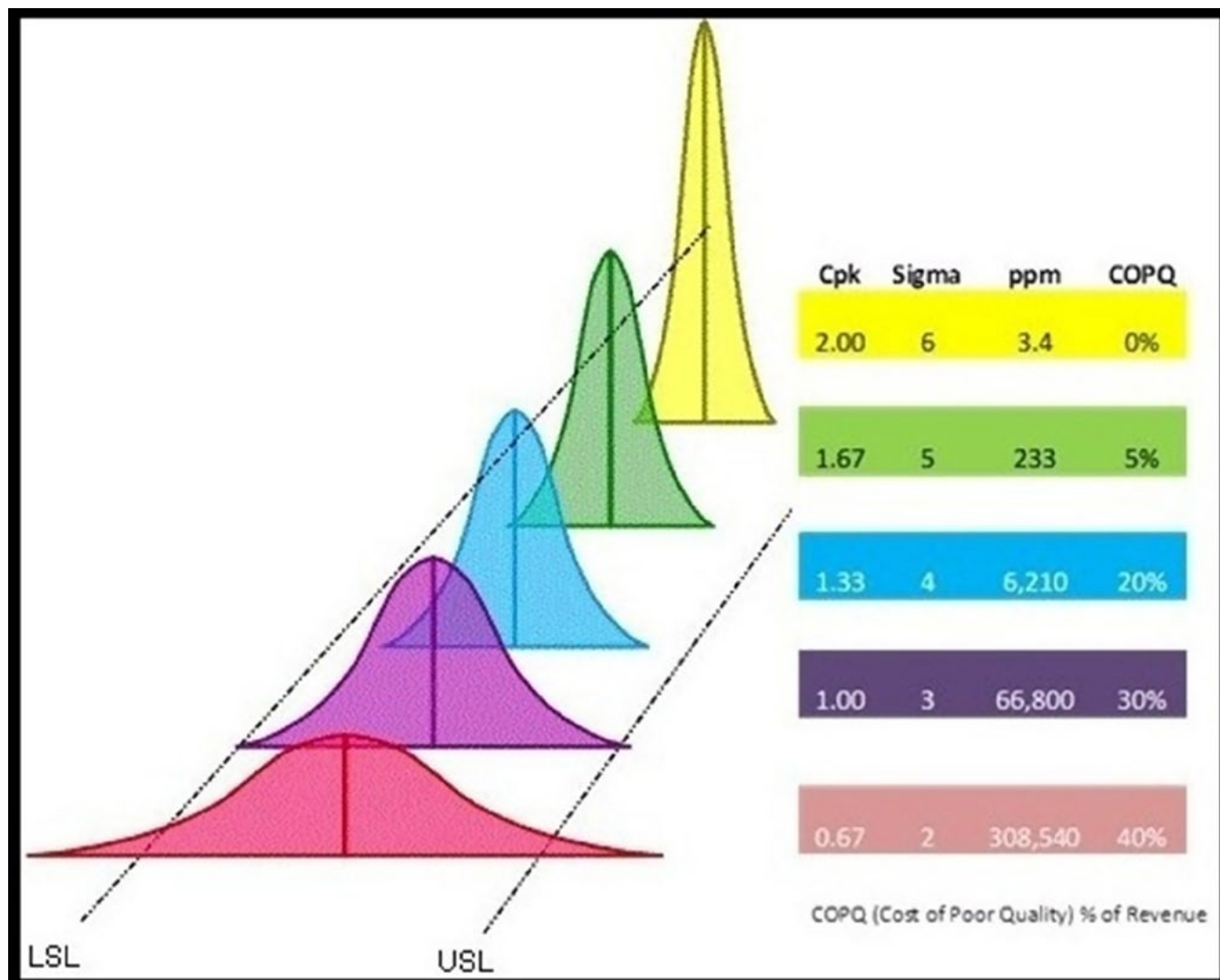


Figure 2: Cpk levels.

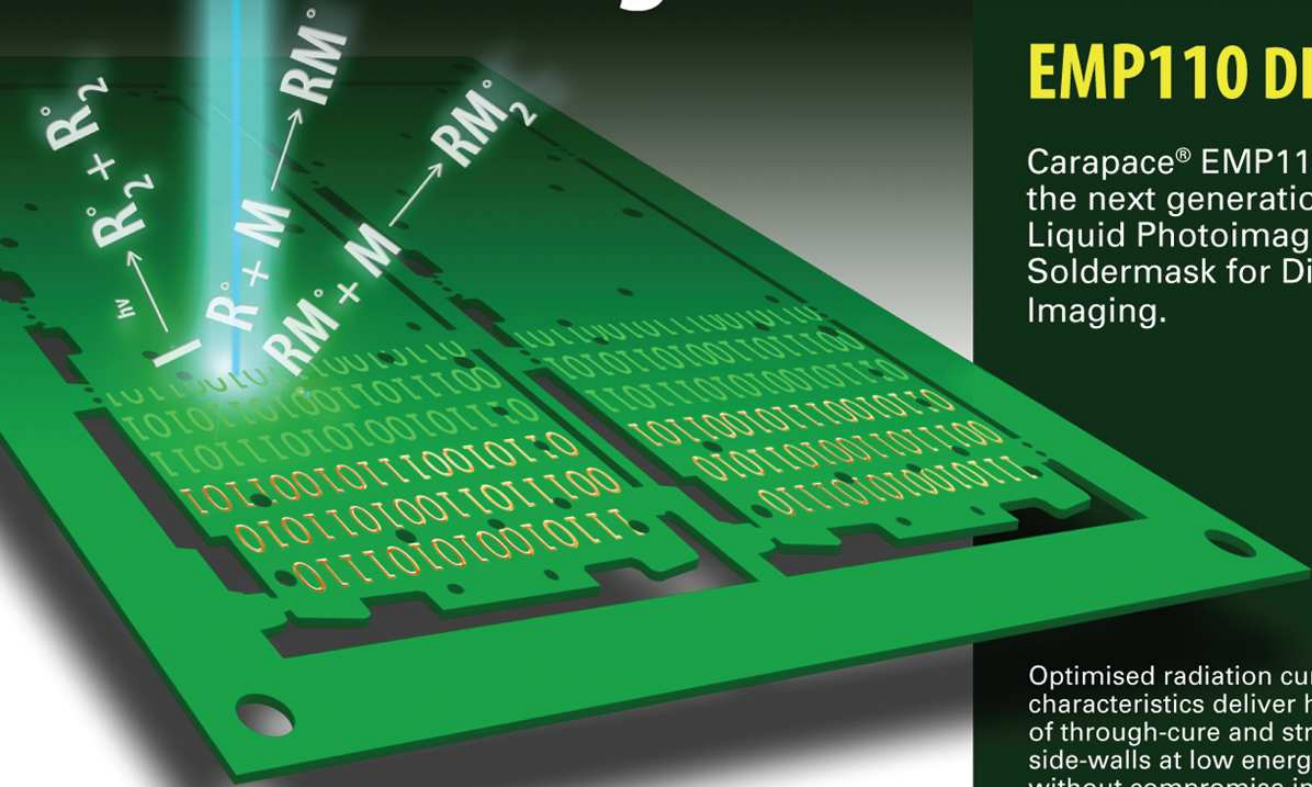


ELECTRA

Direct Image Solder Mask

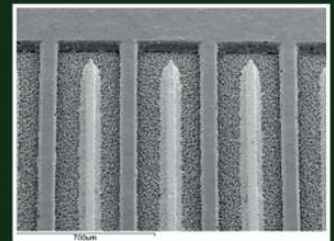
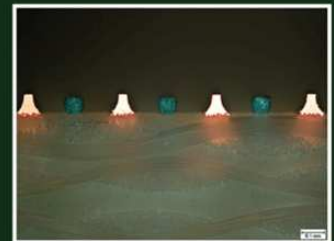
EMP110 DI

Carapace® EMP110 DI is the next generation in Liquid Photoimageable Soldermask for Direct Imaging.



- Suitable for Laser and LED Direct Image Systems
- Versions available for single, dual and multiple wavelengths
- Low Exposure Energy
- Fine Solder-dam Resolution (50 micron, 2mil)
- High Chemical Resistance to ENIG & Sn Processes
- Screen-print and Spray
- Halogen-free, RoHS and fully REACH compliant with no TGIC or other SVHC content.

Optimised radiation curing characteristics deliver high levels of through-cure and straight side-walls at low energy levels without compromise in surface tack or chemical resistance.



DATA ANALYTICS THROUGH STATISTICAL TECHNIQUES

a good start, as this indicates a process that is capable of consistently meeting customer requirements. As with most things, process capability is a continuous improvement journey and future goals should be to move up to the next Cpk milestones of 1.66, 2.0 and beyond. The ongoing quest for improvement is a perfect opportunity for collaboration between your in-house subject matter experts (SMEs) and those of your key suppliers.

A Note on Operator-Level Involvement

There is a tendency for companies to relegate the SPC program to a process-engineer or other staff function, which may not always be real-time. While this can be moderately effective, the greatest benefit would be achieved through active participation of the personnel actually running the process and producing product. A control chart's true function is to provide real-time feedback to control and improve processes. The program will fail if the data displayed on the charts do not help front-line operators make better process decisions to actually monitor, adjust and control their processes.

Whatever the level of participation, SPC requires specialized formal training over-and-

above the standard job function and operational training all employees receive. Statistical theory and methods, process capability, and control chart maintenance, interpretation, and reaction are key topics to be covered in depth.

Let Data Drive Your Decisions

With the abundance of data available to business managers, it is important to filter out the data that does not have a major impact on the business and focus on what does. Statistical techniques are an excellent tool to identify how your processes are really operating, and can be implemented to provide real-time feedback to base your day-to-day decisions on. **PCB**



Steve Williams is the president of The Right Approach Consulting LLC and the former strategic sourcing manager for Plexus Corp. He is the author of four books, including *Quality 101 Handbook* and *Survival Is Not Mandatory: 10 Things Every CEO Should Know about Lean*. To read past columns, or to contact Williams, [click here](#).

Interim CEO Jeff McCreary on Changes at Isola

In a recent interview with I-Connect007, Isola's interim President and CEO Jeff McCreary discussed the impetus for the recent personnel reduction and plant closing that took place, mainly in the U.S. With a realignment towards the Asian market and improved plant utilization in the U.S., Isola expects to become more internationally competitive and improve revenue.

McCreary explained that, with long-time president Ray Sharpe stepping down followed by the reductions, many are probably wonder-



ing about the company's stability. He stated that the company has remained profitable but has suffered revenue-wise in the past few years, due in part to a general market slump in Asia. By improving on their manufacturing utilization rate in the U.S. (savings in the millions) along with more focus on the Asian market, McCreary sees the company as highly competitive going forward.

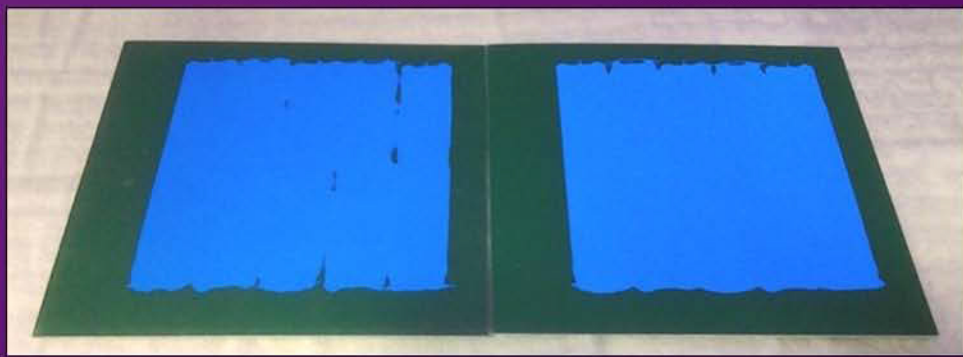
McCreary also shared his bullish view on the electronics industry in general and on what the industry may expect from Isola going forward. In addition, he explained what the company is looking for in a new CEO, which should be announced in the next few months.

To read the entire interview [click here](#).

How Does Plasma Prior to Conformal Coating Help You?

Untreated

Treated



**Enhance Surface Wettability • Improve Adhesion •
Improve Cycle Rates • Lower Fill Thickness •
Remove Organic Contaminants**



Research shows that plasma treatment of PCBAs prior to conformal coating enhances surface wettability, results in excellent conformal coating adhesion, and eliminates delamination problems.

Visit www.nordsonmarch.com/PP2CC to learn more and download the white paper.

See Nordson MARCH at Proelectronica B1.325 and Dage Deuchland A4.106

NordsonMARCH.com | +1 (925) 827-1240



Process Controls for Flexible Circuit Fabrication

by **Dave Becker**

ALL FLEX FLEXIBLE CIRCUITS LLC

Manufacturers of flexible circuits use several chemical processes for fabrication. These processes are generally located in a common area of the plant because of facility requirements and environmental considerations. These chemical operations are referred to as wet processes.

Some of the specific processes that would be characterized as wet process in circuit fabrication:

- **Develop-etch-strip:** Photosensitive resist is developed so the unneeded resist is washed away, leaving a pattern of resist that defines the circuitry. The subsequent etching operation removes the base metal (normally copper) that has been exposed by the patterned resist. The last step is to

remove (strip away) the resist that defined the circuitry.

- **Copper plating:** This is typically an electro-chemical operation. Metal is electrodeposited onto the base metal surface thereby creating a thin, robust coating. Electroplating of copper is the most common example and is used to create electrical connection between traces on the top and bottom of the insulating dielectric film.
- **Shadow plating:** A laminate of metal-dielectric-metal is initially drilled, punched, or laser ablated to form the vias. In order to initially create an electrical connection between the layers of metal, the dielectric must be coated with a conductive material. Shadow plating coats graphite inside a via and is a chemical process commonly used by flexible circuit manufacturers.

Each of these operations relies on chemical reactions, which may be supplemented with mechanical agitation, temperature and voltage/current. In most cases the chemical make-up is the most critical element that affects the output.

It is vital that critical process parameters are tightly controlled to assure desired results. The following are the basic outputs that are monitored and compared to a process or customer specification:

- Trace width and spacing
- Metal thickness
- Via integrity
- Metal composition

Process control in a high product-mix wet process area presents a number of unique chal-



Figure 1: Digital nomenclature printer.

Shadow[®] Inside.

Meet Shadow, our new process for Rigid, Flex and HDI technologies.
Now available on planet Earth ...and beyond!

**Excellent Reliability: Meets MIL-PRF
31032 & NASA Standards**

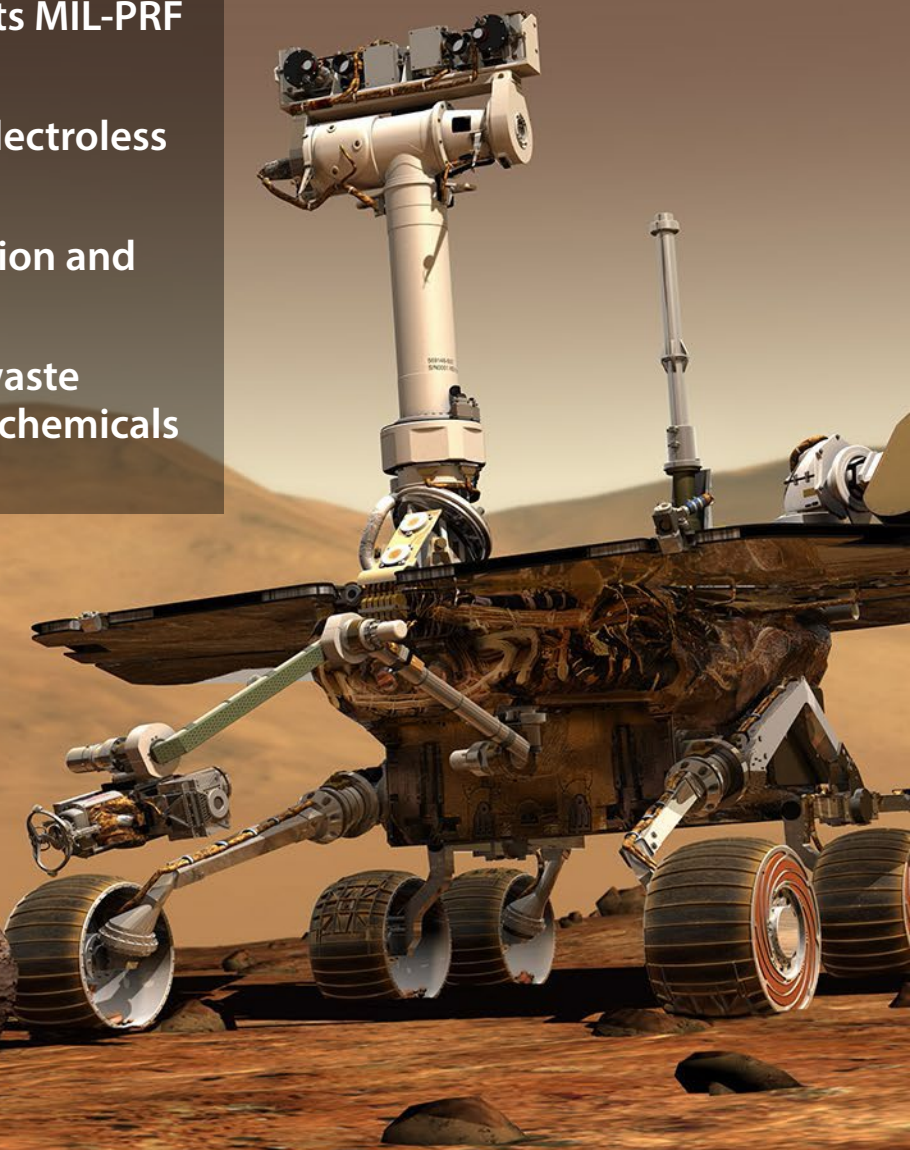
**Shorter cycle time than Electroless
Copper products**

**Smaller Power Consumption and
Water Consumption**

**Green Process: Minimal waste
treatment, no hazardous chemicals**

Want to learn more?

**Visit the
Shadow[®] microsite**



PROCESS CONTROLS FOR FLEXIBLE CIRCUIT FABRICATION

lenges. The following techniques should be used for controlling the wet process operations:

- Statistical process control on chemistry
- Control of process parameters
- Preventative maintenance
- Monitoring of process outputs

Chemistry: Statistical process control techniques are frequently used for controlling critical chemistry parameters. Consistent output is maintained by tightly controlling chemical bath compositions. In a high product-mix environment, copper thicknesses with varying treatment types can change several times during a shift. This will necessitate adjustments in parameters such as conveyor speed, but chemistry and chemical properties are monitored to stay

constant within a controlled range, allowing for a more statistically valid control system.

Process parameters: Process parameters may include dwell time, conveyor speed, bath temperature, spray pressure, voltage and current. Each of these parameters is controlled within a set range, and the exact parameter settings are based on a recipe card for each product family. Parameter settings for recipes are best when statistically determined by designed experiments; recommendations from material suppliers are a good starting point and should be combined with data gathered during process development.

Preventative maintenance: A total preventative maintenance program (TPM) should be developed based on analysis of equipment performance and designed to keep machines



Figure 2: Flying probe electrical tester.

Bringing more technology to North America
to make North American PCB manufacturers
more competitive.

ANPS-6A



The ANPS-6A Moving Probe Tester

maximum
test area
28"x23"

minimum
pad
0.0020"

minimum
pitch
0.0042"

MorTech is excited to introduce the ANPS-6A Moving Probe Tester to North America. ANPS is one of Asia's industry leaders for high volume/high performance electrical test equipment.

The ANPS-6A uses precision linear XY motion, performance-based optimization software and Z-axis control to offer unmatched price performance.

[Click here for detailed info and specs for the ANPS-6A »](#)

VIEW OUR FULL LINEUP



www.mortechinc.net | (916) 473-2140

PROCESS CONTROLS FOR FLEXIBLE CIRCUIT FABRICATION

running within ideal process parameters, as opposed to a program that is merely designed to keep a machine from breaking down.

Output monitoring: Critical outputs are monitored and recorded at the source. Measurements include plating thickness, etch ratio, trace width, metal composition, via wall integrity, and other numerical measurements. Discrepancies found should generate a “non-conforming material report.” Non-conforming material reports should be regularly reviewed, corrective actions identified, and results tracked. This ongoing corrective action system becomes a closed loop system of “plan-do-check-act” as part of an effective continuous improvement program. Similar systems for process control have proven effective in achieving desired quality levels at acceptable yields across a wide range of industries.

Effective process controls are a critical, but incomplete, method for insuring proper customer product quality. The addition of strategic inspection and monitoring operations also play a role. Within the world of printed circuit boards, several containment methods are common:

- Bare board automated optical inspection (AOI): Any discrepancy in conductor width and spacing is flagged by this test. All layers should undergo this 100% inspection.

- Bare board electrical testing: These circuits without components often undergo an electrical test designed to catch all opens and shorts. This can be done with a bed-of-nails test fixture or with a point-to-point flying probe tester.
- Populated board electrical testing: Circuits with connectors, passive components and/or active components may also undergo a functional electrical test.
- Populated board AOI: Optical inspection machines also are used to examine populated circuits to ensure all components are present, orientation is correct, and location accuracy is proper.
- Quality audits: In-process inspection and testing are done to a statistically based sample of a production work order.
- Customer specific audits: Unique data gathering is often required by certain customers or within specific industries, especially those involving high-reliability applications. Specific features are verified or test data is generated to insure quality conformance. These requirements can be as varied as the applications within our wonderful world of electronics.

Printed circuit fabrication involves processing through a long list of sequential operations. Producing a completed part might involve drilling, imaging, etching, resist removal, cover film attachment, lamination, surface treatment, and many other individual processes. In many cases, fabrication involves 40 or more unique processing steps. A 99% yield at every process would result in a final lot yield of less than 67%, which would likely be too low to sustain the business. Yields of 100% at most processes are required for profitability, and good process controls are required to achieve this level of product robustness and predictability of the output. **PCB**

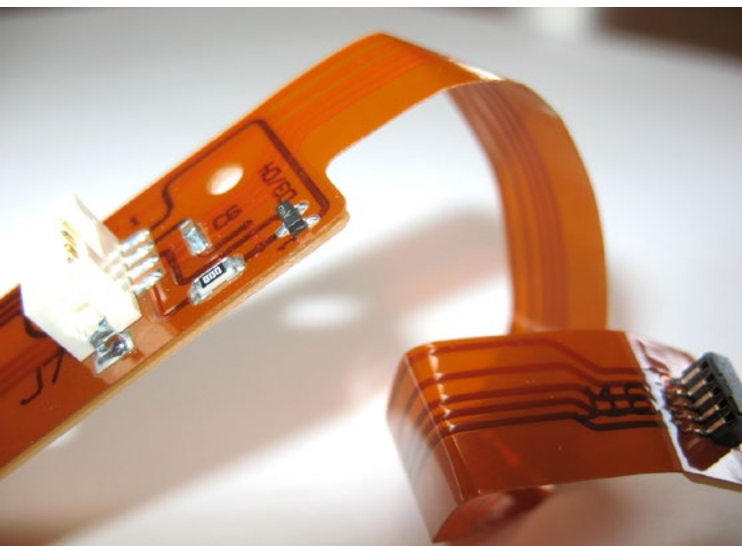


Figure 3: Flex circuit with component assembly.



Dave Becker is vice president of sales and marketing at All Flex Flexible Circuits LLC. To view past columns or to reach Becker, [click here](#).

THE GREAT MINIATURIZATION: SYSTEMS AND PACKAGING

Technology Enabling Systems in your Pocket and Beyond

NOVEMBER 10 & 11, 2015 BILTMORE HOTEL, SANTA CLARA, CA

Diamond Sponsor



A JOINT MEPTEC AND SEMI TWO-DAY SYMPOSIUM

Symposium: November 10th & 11th, 8:00am to 5:00pm

Reception: November 10th, 5:00 to 6:30pm

Exhibits: November 10th Only, 10:00am to 6:30pm

Gold Sponsor



Gold Sponsor



Reception Sponsor



Association Sponsor



The first day of this two-day symposium will address the applications that drive the technology; the second day will cover emerging technologies and a wrap-up panel discussion with the experts. Each day will feature a leading industry keynote speaker.

SESSION TOPICS INCLUDE:

TUESDAY, NOVEMBER 10

- The Genius of Cars – and why Semiconductors Matter
- High Speed Components and Packaging
- Medical and Wearables for Human Health: Connecting the Dots from Silicon through Packaging
- Power Management and Energy Harvesting: Opposite sides of the Same Coin Battery?

WEDNESDAY, NOVEMBER 11

- Multi Die Integration
- On the Road to SiP and Modules
- Carrying the Standard(s) for Packaging
- IC-Package-System Co-Development in the New SIP Era

Register Online Now:

www.meptec.org

SPONSORSHIP AND EXHIBIT OPPORTUNITIES AVAILABLE

Contact Bette Cooper at bcooper@meptec.org or call 650-714-1570.

Media Sponsors



THE POWER OF DATA:

The Most Important Questions Any Leader Must Ask

by Dave Dibble

NEW AGREEMENTS INC.

In the recently completed I-Connect007 survey of readers titled, "The Data Factor(y): The Power of Data," I had difficulty segmenting the results into useful categories. In other words, what were the issues that most concerned readers and customers? Responses seemed to flow toward a catchall bucket that I might describe as the following:

1. What are we supposed to be measuring?
2. How should we measure it?
3. How do we get people to respond properly once we have identified what and how to measure and implemented a robust data collection system?

You see, if we answer these three questions correctly, we are in good shape to become systems-based, more conscious leaders and managers and hence much better organizations.

What to Measure

I had the privilege to spend time with David Chambers, probably the country's most esteemed statistician who constantly reminded us, "Focus on what you measure and how you measure. If you get these right, everything else will follow. If you don't get these right, it's impossible to improve and control a system or process."

We don't want to measure everything. That's a trap that companies sometimes fall into, whereby excess time and effort collecting and evaluating data produces more frustration than valuable information. Generally, about 20% of the data will give us 80% of the benefits we need to control and improve our systems, both on the manufacturing floor and in service areas. Often, when we try to measure too many things, we become inundated with mostly useless data that obscures the important stuff we should be focused on. This is also where people stop looking at/acting on the data because it's simply too time-consuming and cumbersome



Low loss. High Reliability. No limits.

Our Symanic Series materials offer great performance for high speed applications. To find out why you should be using Symanic, click on one of the logos below!

Symanic 4

Low Loss Material

Symanic 6

Very Low Loss Material

Symanic 6N

Ultra Low Loss Material



Photo Chemical Systems

www.photochemicalsystems.com

PARAMOUNT

www.paramount-usa.com

THE POWER OF DATA: THE MOST IMPORTANT QUESTIONS ANY LEADER MUST ASK

to guide anyone toward “right” action—the real purpose of good/meaningful data.

Identifying What to Measure

Our experience in the field indicates that a good starting point for deciding what to measure is to look at the systems that most impact your customers, your people, and your suppliers. These three areas are the three legs of the stool we call business. Importantly, you will want to identify the 20% of the systems in each area that are producing 80% of the problems or issues you are experiencing. Once these systems have been identified you can begin to create

“One reliable way to identify stressed systems is to measure the stresses imparted onto people who work in or are directly affected by poor systems.”

priorities. Remember, we can’t fix everything all at once, nor should we try. One reliable way to identify stressed systems is to measure the stresses imparted onto people who work in or are directly affected by poor systems.

In setting priorities, look for systems that are “early” in the process. For example, fixing design or manufacturing engineering will generally produce greater overall benefit than fixing shipping. Functions early in the process will tend to leverage good stuff throughout the organization.

Second, look at the handoffs between departments, shifts, key employees and so forth. Normally you will see that your biggest problems are in the handoffs. This is because the first 15% of any system is the most critical to its function, both good and not so good. If you get the first 15% right, the rest will fol-

low. In handoffs, whatever is handed off from a system is usually the first 15% (inputs) to the next system. If you don’t get this right, there is no chance of fully optimizing the receiving system.

How to Measure

Even if you identify correctly what to measure, if you don’t measure properly, the data will take you in the wrong direction, buoyed by faulty conclusions. While it takes a little more time on the front end to get your data collection correct, there is a huge payoff in your systems optimization efforts. I have a little saying I use to describe leaders and managers who are great firefighters: “No time to do it right; plenty of time to do it over.” In quality and systems improvement, the slow road becomes the fast road and vice versa. It takes time to create a check sheet where the complexity is in the tool, not in the hands of the data collectors. Yet, once the proper data collection tool is created and people trained in its use, we get both the data we need and people using the tool correctly.

Now comes a critical question. Who is responsible for what and how we measure? This should be the people doing the work: frontline staff, marketing and customer service personnel, the receptionist, the guy sweeping the floors on third shift. You get the idea. If your quality or IT departments are responsible for what and how things are measured, you will get more of what you have now within a range. For sustainable quality and systems improvement, a systems-based approach for doing work must become the way you and your people work. Yes, for leaders and managers, too. Basically, the depth of change in any organization will be gated by the amount of growth in leaders and managers. No growth = little sustainable change.

Starting with Something Different than SPC

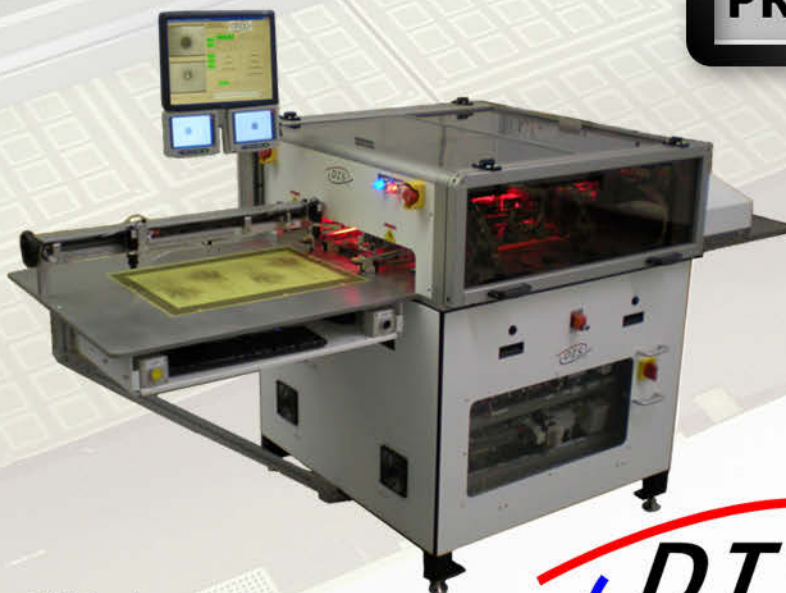
If you are Toyota, Honda, or another company that is steeped in systems-based leadership and management, forget about everything I’m about to share. However, if you’re having difficulty creating and maintaining your quality culture and systems, what follows may be quite helpful.

THE MOST IMPORTANT POINTS IN MULTILAYER ALIGNMENT ARE **ACCURACY** **ACCURACY** **ACCURACY** **DIRECT OPTICAL REGISTRATION**

The only system on the market that will cut the layer to layer alignment tolerance in half of the best pin process available—and we have the customer data to prove it!



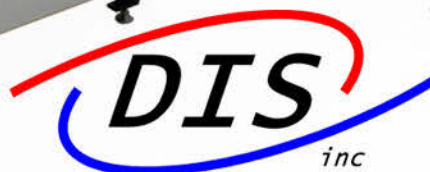
PRS - Shuttle



34 layer panel
with thin core
and subs in the
final stack-up



DIS, Inc.
85 Hoffman Lane, Suite Q
Islandia, NY 11749



Designed, Patented and Made in U.S.A.

For more information email:
sales@distechnology.com
(631) 851-0102
www.distechnology.com

THE POWER OF DATA: THE MOST IMPORTANT QUESTIONS ANY LEADER MUST ASK



Although I taught basic statistical process control (SPC) tools to my clients, I noticed that many people were fearful of learning to use these tools. This was especially true of non-technical workers and managers who didn't want to look foolish with their lack of mathematical background. Leaders too, in many cases, showed little desire to learn or use the tools. For some, English was a second language, making learning still more difficult. People do not learn well or easily when in fear.

We found that, in order for people to learn, use, and eventually own the tools, we had to reformat the tools, making them simple, user friendly and even fun. Once people realized they could be successful using the simplified tools, it was not unusual to have people up and doing good systems improvement work in only a day or two. Remember, if your front lines are not using the tools on a daily basis, you're not systems-based. When your organization is people-based, you are asking for the fires you put out yesterday to be burning brightly sometime in the near future, along with all the associated costs.

What and how you measure are the two most important criteria for your business in do-

ing data collection for the purposes of improving systems and processes. If you get the what and how of data collection correct, you will be well on your way to solving your most intractable problems and creating ever better quality and customer service at ever lower cost—the ultimate competitive advantage.

As a consultant or trainer, I almost always work with people-based companies. Systems-based, data-driven companies probably have little need of my services. The calls I get are from companies that are usually experiencing recurring systems problems that are negatively affecting current and future financial performance or customer satisfaction. Just because you're collecting data or have implemented a systems-based quality program such as Six Sigma or Lean doesn't make you a systems-based organization, just as GM or Chrysler will never be Toyota or Honda.

Whether it is a PCB, assembly, design or other interconnect-related business that is having ongoing or recurring problems, the source of those problems is almost always systems based. However, the cultures of the companies is people-based and so puts on pedestals the best fire fighters. Also, these companies tend to look at technology as the source of solutions, which in many cases is, at best, only a partial solution.

If your company has recurring problems that significantly affect the quality and cost of your products and services, you'll want to learn how to identify what to measure and how to measure and take right action based upon that data. However, before you do all that, take a look in the mirror and examine the thinking that has brought you to this point in your business. It's not what you don't know that is hurting your business. It's what you "know" that isn't so. **PCB**



David Dibble is a keynote speaker, trainer, consultant, executive coach, and systems thinker. For more than 25 years he has consulted and trained in the workplace, with a focus on his systems-based book, *Four New Agreements for Leaders and Managers*.

Delivering the highest quality standard for **Aerospace and Defense**



Ventec Europe Accredited to AS9100 Revision C

We are proud to announce that the quality management system at our Leamington Spa, UK, headquarters is now fully accredited to AS9100 Revision C (the two facilities of our parent company, Ventec Electronics Suzhou Co Ltd, have been fully AS9100C certified since 2012).

AS9100 is the quality management standard specifically written for the aerospace and defence industry, to satisfy authorities such as the Federal Aviation Administration, ensuring quality and safety in the "high risk" aerospace industry.

Wherever technology takes you, **we deliver.**

MORE INFO:

**POLYIMIDE & HIGH RELIABILITY
FR4 PRODUCTS**



Please visit us at
productronica 2015
Hall B1 Booth 142



ventec



Ventec Europe
www.ventec-europe.com

Ventec USA
www.ventec-usa.com

Ventec International Group
www.ventecclaminates.com



Get Ready for the Transformation at 2015 HKPCA & IPC Show

In the “Electronics and Information Industry White Papers Series” (2015 Edition) that was released recently, a total of 20 white papers were published to track and analyze 20 industry segments and their respective developments in 2014.

Interim CEO Jeff McCreary Discusses Recent Changes at Isola

Isola’s Interim President and CEO Jeff McCreary explains to Barry Matties the impetus for the personnel reduction taking place at Isola, the closing of their Northern California facility, and why there is no need to panic. He also shares his view of what the industry may expect from Isola going forward and what the company is looking for in a new CEO.

TUC Found to Infringe Isola Patents

Isola Group announced today that a jury in the U.S. District Court for District of Arizona found that Taiwan Union Technology Corporation (TUC) had directly and indirectly infringed key patents held by its U.S.-based subsidiary, ISOLA USA Corp. The products found to infringe were TUC’s TU-872 laminate and prepreg products.

Cirexx Installs Second Excellon Laser

Cirexx International announced today that they have acquired and installed a second Excellon laser. The new machine is the Cobra-II Hybrid Laser equipped with Excellon’s latest laser technology. It will drill holes, rout boards and micro-machine fine features.

Ucamco Launches 3 Wavelength Series of Ledia Direct Imaging Systems

Ucamco is delighted to announce the new 3 Wavelength series of Ledia Direct Imaging (DI) systems for the accurate, high-speed exposure of the industry’s most demanding soldermask, inner-layer and outer-layer resists.

MacDermid Appoints Joe D’Ambrisi as VP, Global Electronics Solutions

MacDermid Electronics Solutions announces the appointment of Joe D’Ambrisi as vice president, Global Electronics Solutions. In his new capacity, D’Ambrisi will have global responsibility for all of MacDermid’s electronic solutions operations including sales and technical support, research and development, marketing, OEM, and advanced electronics.

Matrix USA Holds Open House at Santa Clara Facility

Matrix USA featured an open house at their Santa Clara, California warehouse on September 15, 2015, held in conjunction with the PCB West Technical Conference and Exhibition at the Santa Clara Convention Center.

AirBorn Flexible Circuits Names Matrix Electronics a Preferred Partner in Success

AirBorn Flexible Circuits Inc. named Matrix Electronics Limited as a PREFERRED SUPPLIER and a Partner in Success. Each year, this award is granted to the supplier who demonstrates an excellent track record for on-time delivery, quality and technical support.

Cipsa Circuits Installs Orbotech Fusion AOI and Sprint 120 Inkjet Systems

Orbotech Ltd. announced today that Cipsa Circuits, a European PCB manufacturer and long-time customer of Orbotech, has completed integration of two Orbotech Fusion AOI systems and one Orbotech Sprint 120 inkjet system, purchased in the first half of 2015, for their PCB production facilities in Spain.

Frontline PCB Solutions and Nanjing College Launch InCAM Excellence Academy

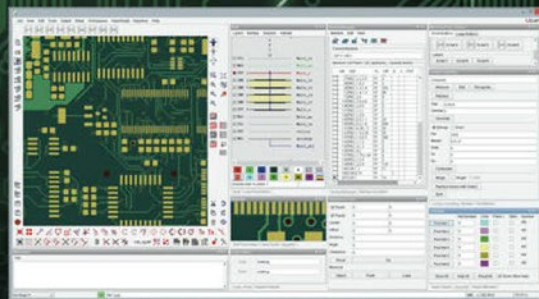
Frontline PCB Solutions and Nanjing College of Information Technology in Jiangsu Province, China, established an official training center—InCAM Excellence Academy. Successful graduates will be awarded a Frontline PCB Solutions InCAM certification qualification.

Software

UcamX

New ground-breaking CAM Software

- For Rigid, Flex and HDI PCBs
- New Graphical User Interface with Workspaces
- Optimal performance using Parallel Processing
- Multi Job Processing via load balanced Sessions
- Support for Gerber version 2 (X2) format



[Read more](#) →

64 Bit

Multi Core

Software

Integr8tor

Automated data entry and design analysis

- Ucamco's 9th Generation Sales & Engineering Tool
- Field proven with more than 250 installations in daily production
- Seamless integration into any environment



[Read more](#) →

Multi Core

64 Bit

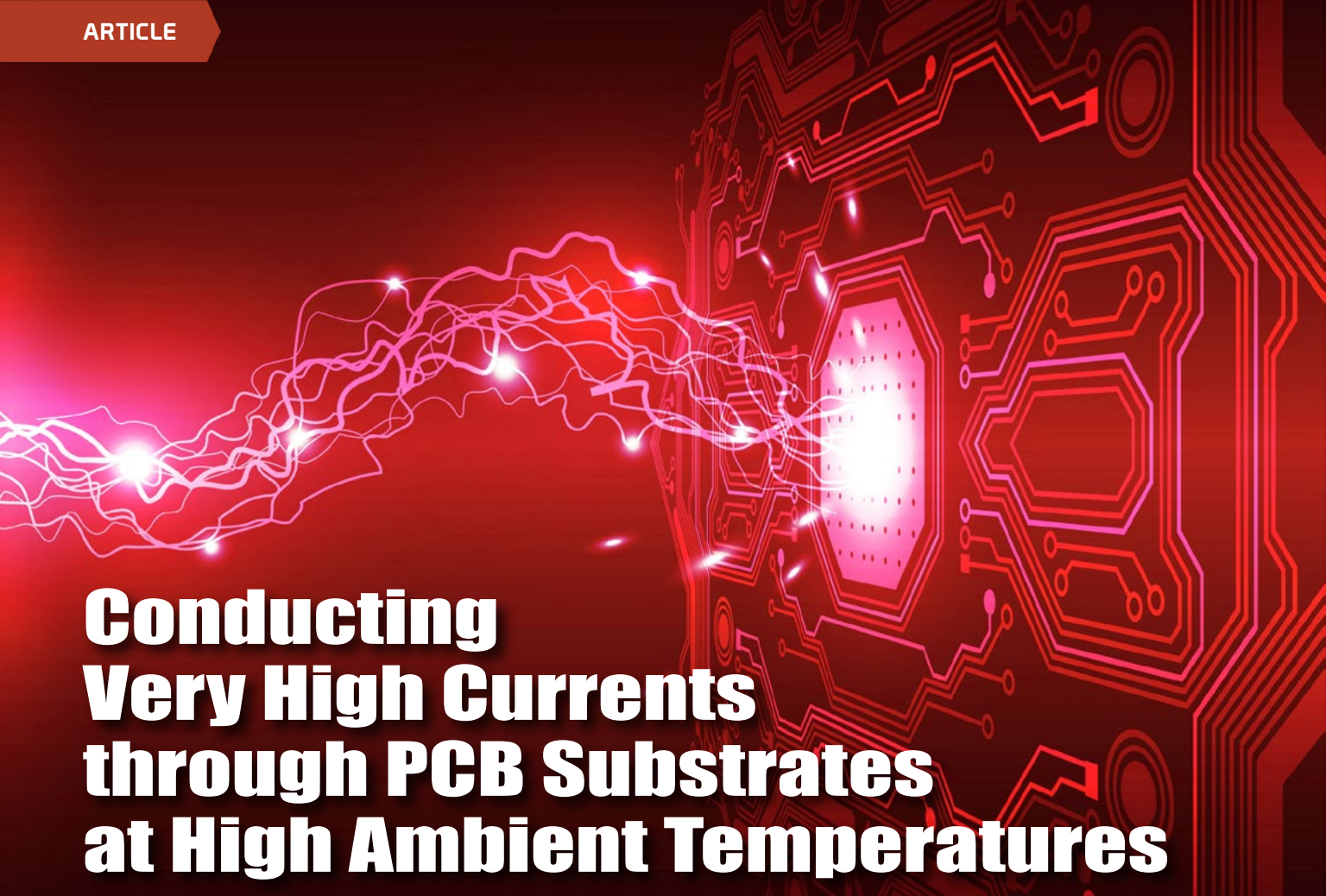
PHOTOPLOTTERS

Calibr8tor & SilverWriter

- Ucamco's Photo Plotters, the world-wide benchmark for accuracy, throughput and reliability
- Field proven with more than 450 installations in daily production
- Seamless integration into any CAM System



[Read more](#) →



Conducting Very High Currents through PCB Substrates at High Ambient Temperatures

by **Thomas Gottwald and Christian Rößle**
SCHWEIZER ELECTRONIC AG

Introduction

One of the major challenges of our time is climate change and the associated need to reduce greenhouse gas emissions. The requirement to reduce CO₂ emissions has brought about significant changes in the area of power generation, and also in the area of mobility.

Supported by a favorable subsidy policy, the solar boom originated in Germany and quickly spread widely across Europe. Government policy has specified a sharp reduction of CO₂ emissions for the automotive industry as well, increasing the pressure to come up with new developments within the entire supply chain.

The advancing electrification of motor vehicles that currently takes place predominantly in the area of auxiliary units, and the demand for power inverters for renewable energy sources, have triggered a worldwide demand for power electronics components and led to significant

development efforts towards efficient, cost-effective and reliable power electronics.

Challenges in Power Electronics

Anyone in the field of power electronics will quickly get involved in discussions about efficiency. On the one hand, the reasons result from technical requirements and, on the other hand, from purely economic considerations. For example, the efficiency of a solar power inverter to be purchased must be carefully considered as differences in efficiency of merely a fraction of one percent can greatly affect the yield of the entire system.

The efficiency is also a very important factor for the controllability of power electronics applications as every loss in efficiency also means power dissipation, which is directly converted into heat.

The higher the system performance, the higher the effort for removing the generated power dissipation. Higher power dissipation also means higher economic losses caused by the low efficiency of the entire system.

ADVANCED CIRCUIT COPPER FOIL

Copper Foil with Aluminum Carrier

ACF2

Single-sided Copper-Aluminum Layer

ACF3

Double-sided Copper-Aluminum-Copper Layer

Benefits

Improve Your Yields

- Protect the copper surface
- Eliminate Epoxy Spots
- Reduce Pits and Dents due to airborne particulate
- Buffers the Copper Foil from damaged Separator Plates

Improve Your Productivity

- Speeds up the Layup Process
- Improves handling of thin Copper Foils - 5 μm , 9 μm & 12 μm
- Suitable for Automated Handling Systems
- Can replace expensive Copper/Aluminum/Copper and Aluminum/Bonded/Copper products

MADE EXCLUSIVELY
WITH



Contact us for more info

Email: info@advancedcopperfoil.com

Web: www.advancedcopperfoil.com

CONDUCTING VERY HIGH CURRENTS THROUGH PCB SUBSTRATES AT HIGH AMBIENT TEMPERATURES

Challenges for Electronic Substrates

Electronic substrates for power electronics applications must support the requirement for a high efficiency of the entire system. Therefore, the losses on this level must be minimized.

The second requirement is the support for thermal management of the assembly, in which the electronic substrate often plays an important role.

In addition to that, electronic substrates in power electronics must obviously support all functions of electronic substrates in conventional electronics.

“Electronic substrates for power electronics applications must support the requirement for a high efficiency of the entire system.”

Impact of Materials

Losses in Metal Layers

Ohmic losses in metal layers that often consist of copper or copper alloys play an important role in power dissipation considerations for electronic substrates. Even though the intrinsic resistance of copper is low, it cannot be ignored if high currents are present, as it causes the conductor to heat up. This contributes to heat development in the entire system and must therefore be minimized.

Properties of Insulators

Another important factor in these considerations is the thermal conductivity of the substrate: The ampacity of a conductor is ultimately limited by the thermal destruction of the conductor. The better the heat dissipation of the conductor itself, the more current it can carry. Therefore, factors such as the specific thermal

conductivity and thickness of the insulator play a crucial role.

Increasing Conductor Cross-sections

Increasing the conductor cross-section is an effective method to reduce the ohmic resistance. In many cases, there is no alternative to this. However, it must be considered that increasing the cross-section leads to additional weight, which is undesired in electric mobility applications as any increase in weight decreases the driving range of the electric vehicle. The conductor cross-section design must in turn satisfy the specifications regarding heat generation. The heat generation depends on the thermal conductivity of the substrate and its connection to a suitable heat sink. The higher the temperature stability of the insulator, the higher the permissible heat generation in the conductor for system design.

For these reasons, determining the required conductor cross-section has evolved into a complex task. The conventional methods and rules for layout design as described in IPC or FED can no longer be applied in many cases as they do not take these new boundary conditions into account.

Temperature Stability of Substrates

Another central aspect is the temperature stability of PCB substrates in power electronics. Power semiconductors can usually withstand junction temperatures of 175°C. This temperature range is increased further by new semiconductor technologies and is expected to reach 200°C or even 225°C within the next few years.

The full exploitation of this temperature range requires substrates that can be used in the mentioned temperature range.

Increasing the operating temperature also serves the purpose of minimizing efforts for the cooling system and hence minimizing system costs of the power electronics.

Ceramic substrates such as DCB/DBC substrates currently have a deep impact on power electronics as they combine excellent electrical insulation with high thermal stability. The downsides are the high costs of ceramic substrates and the limitation with regard to fine structures and number of substrate layers.

CONDUCTING VERY HIGH CURRENTS THROUGH PCB SUBSTRATES AT HIGH AMBIENT TEMPERATURES

Organic PCB materials do not have these restrictions with regard to structure and number of layers, however, the thermal conductivity of the epoxy resins used is significantly lower than in ceramic materials.

A big advantage of PCB substrates is their significantly lower cost, which is why the use of ceramic substrates is limited to those power electronics that cannot be implemented without the properties of ceramic materials.

Assembly and Interconnection Technology for Power Electronics Systems

The conventional processing technology for PCBs is the fully automatic assembly of SMD components. The through-hole assembly is mostly limited to DC-link capacitors, if these have not yet been replaced by SMD components.

In ceramic substrates, the bottom side of bare semiconductors is connected to the substrate in the electrical, mechanical and thermal sense by means of conductive adhesives, soldering, silver sintering or diffusion soldering.

The conventional way of connecting the top side is via aluminum heavy-wire bonding, how-

ever, this technique is slowly being replaced by Cu wire bonding. After assembly, the bonds are often stabilized by sealing them with a highly viscous silicone gel.

The required logic control and driver electronics are implemented via a separate substrate (usually a PCB) and are often interconnected with the power electronics via press-fit contacts.

Most entire systems of power electronics applications have a large number of different assembly and interconnection technologies that must meet the required targets regarding reliability and costs on their own as well as in combination.

Reliability Aspects of Assemblies

Adjustment of the Expansion Coefficients

Due to their coefficient of expansion (CTE), organic PCBs are well-adjusted for components in housings such as QFP or DIP. Assembly of bare semiconductor components such as flip chips, however, is critical. Depending on their structural design, ceramic chip capacitors can also be critical as they have significantly lower CTEs.

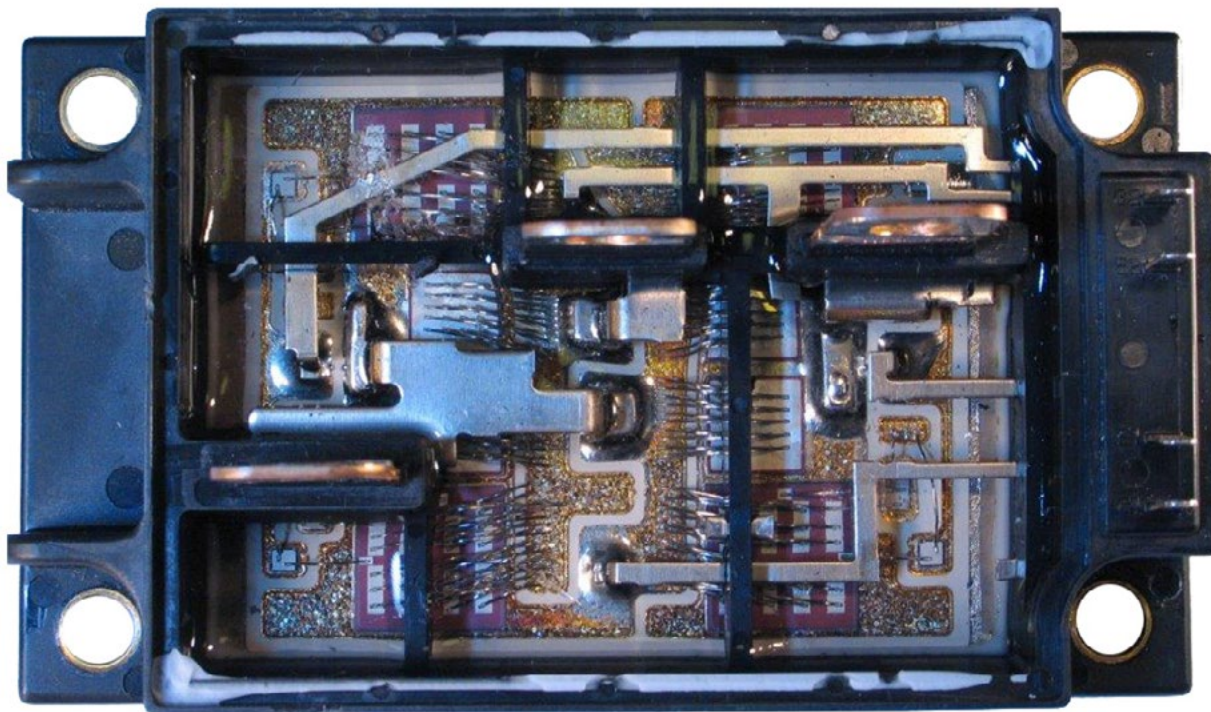
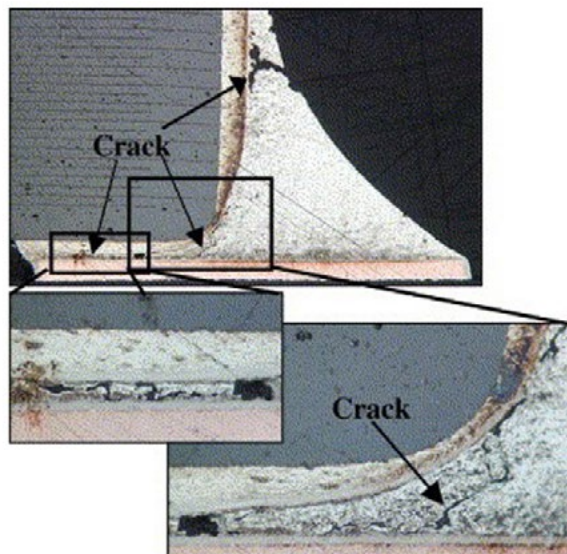
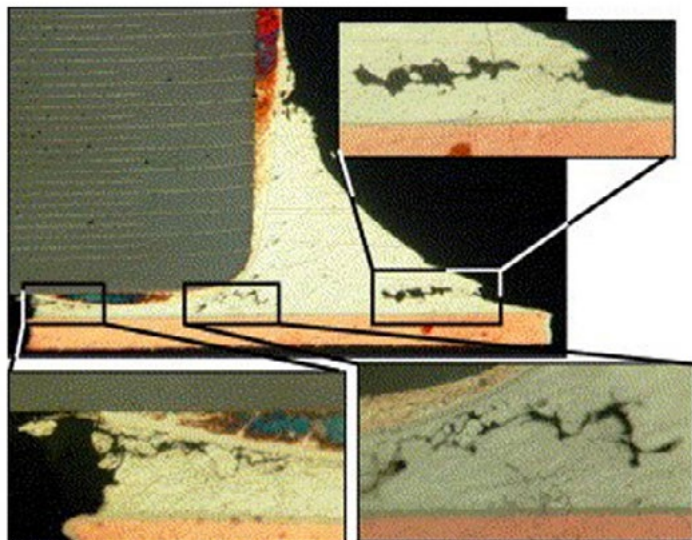


Figure 1: IGBT module power electronics based on DCB ceramics with power busbars in plastic housing. (Source: www.enacademic.com)

CONDUCTING VERY HIGH CURRENTS THROUGH PCB SUBSTRATES AT HIGH AMBIENT TEMPERATURES



Figures 2 and 3: Soldered joint failure of a ceramic chip capacitor.

As opposed to that, DCB/DBC ceramics are assembled with bare power semiconductors. The lower coefficient of expansion of the ceramic base material leads to a better adjustment of the CTE between substrate and component in this scenario. The bare dies are then connected to the substrate and the terminals using wire bond technology. Due to their ampacity, heavy aluminum wires with a diameter of 500–600 μm are used for this.

Failure Mechanisms of Assemblies

The classic failure of assembled PCBs is failure of soldered joints in poorly adjusted components due to cyclic thermal loads. In the PCB itself, failure of interconnections has to be mentioned, due to the anisotropy of the CTE in x/y direction as compared to the z direction is common.

In ceramic assemblies, however, the classic failure case is bond lift-off from the power semiconductor caused by the large difference in the CTE between Si (2.7 ppm/K) and Al bond wire (24 ppm/K). Another mechanism is conchoidal fractures of ceramics induced by CTE differences of ceramics (approx. 7 ppm/K) and copper metallization (17 ppm/K).

Due to the aforementioned reasons, most power electronics systems use a mixture of ceramic substrates and PCBs that are interconnected by assembly and interconnection technologies that can be very sophisticated and



Figure 4: Cracks in a heavy wire bond on an IGBT (silicon) surface. (Source: www.powerguru.org)

complex at times. They are implemented by way of wire bonding, plug connectors, soldering or welding technologies, and modern power electronics systems often combine all available assembly and interconnection technologies in one single system.

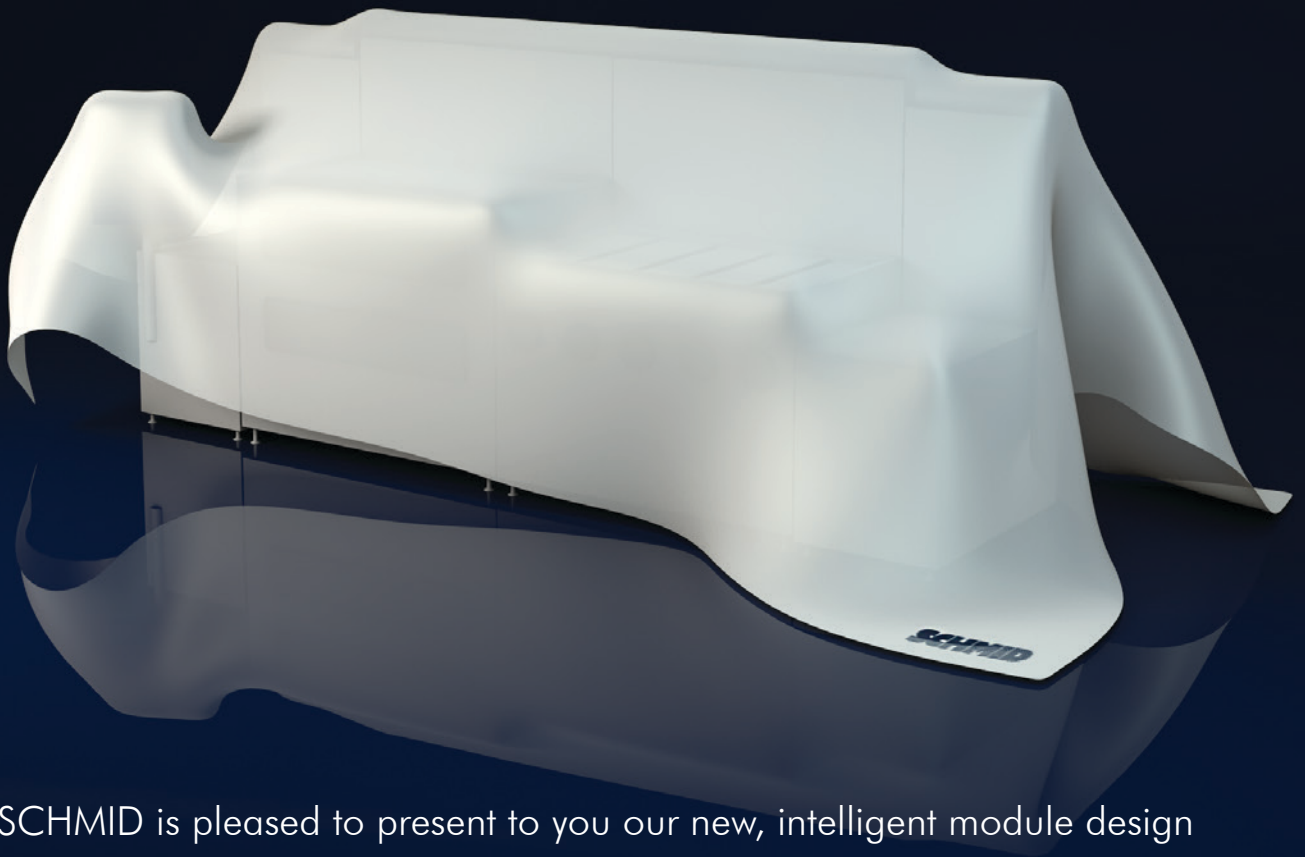
Optimization of Power Electronics Systems

Therefore, the essential requirements for optimized substrates in power electronics systems are as follows:

- Increased ampacity
- Optimized thermal conductivity
- Increased temperature stability
- Reduced system complexity
- Increased system reliability
- Minimized costs

new, newer, **NEO**

We disclose the secret at productronica 2015
November 10th - 13th | hall B1, booth 205



SCHMID is pleased to present to you our new, intelligent module design and the NEO concept "New Etching Options" at this year's productronica. Let yourself be surprised.

Expect Solutions.

CONDUCTING VERY HIGH CURRENTS THROUGH PCB SUBSTRATES AT HIGH AMBIENT TEMPERATURES

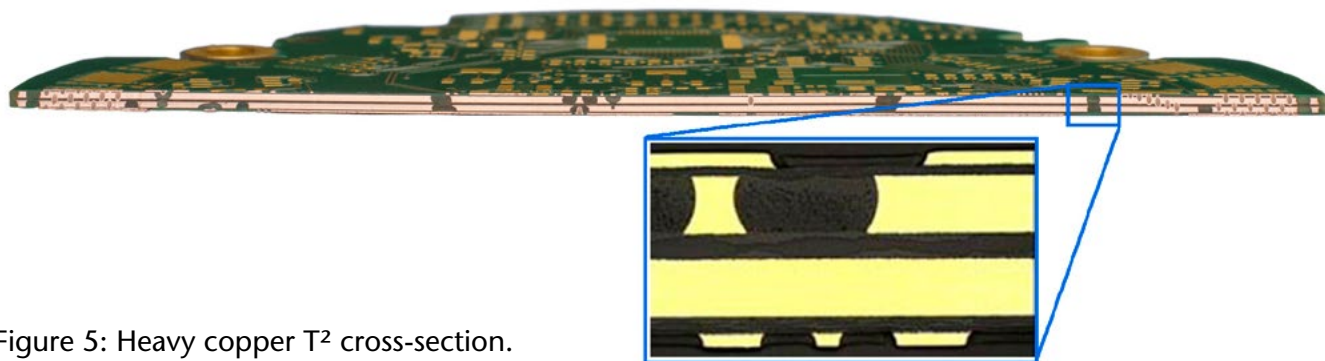


Figure 5: Heavy copper T² cross-section.

Solutions for Today's and Tomorrow's Requirements

Heavy Copper T²

Heavy Copper T² is based on conventional heavy copper technology. In conventional heavy copper technology, the PCB design is characterized mainly by etched areas that must be filled with large resin volumes released by the prepregs used during the lamination process. Due to the large amount of resin used, multiple prepregs must be used, leading to large insulation thickness between the outer layer and the inner heavy copper layer. This means that the microvia technologies such as laser-drilled blind holes could not be used with heavy copper technology due to the large insulation thickness. Furthermore, the insulation thickness increases the thermal resistance of the printed circuit board and decreases its reliability as interconnections of thicker circuits are subject to more stress during cyclic thermal loads.

Heavy Copper T² technology overcomes these disadvantages by filling the etched areas of heavy copper circuits in a special manufacturing step. Therefore, thin prepregs can be used in the subsequent lamination process. This results in the following advantages:

- Lower overall thickness of the printed circuit board
- Lower clearances between the copper layers
- Increased reliability in cyclic thermal loads
- Increased thermal conductivity in the Z-axis (through plane) of the design

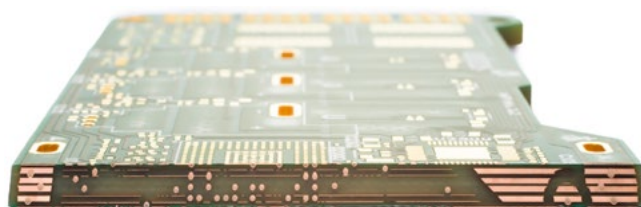


Figure 6: Cross-section of the Power Combi Board.

The Power Combi Board

The Power Combi Board uses a combined inner layer with heavy copper areas used for high-current conduction. However, the same level also has copper layers with a standard thickness of 18 or 35 μm that help to ease the routing for the use of complex components.

With this technology, the power and logic parts of an application can be implemented with just one circuit board, whereas previously, two circuit boards were necessary, which had to be connected with a plug connector.

The new solution helps increasing the reliability and making optimal use of the required installation space.

The Inlay Board

Printed circuit boards with pressed-in copper coins are well-known in the area of thermal management. The main disadvantage of this technology is the challenging thickness adjustment of the copper coins to the circuit board. While the coins have very low tolerances, multilayer circuit boards have a thickness tolerance of up to 10% due to the manufacturing processes. Therefore, flush fitting of the circuit board

COOLSPAN® TECA

thermally & electrically conductive adhesive

Rogers can help by being your reliable conductive adhesive film source

Get the heat out of those high-power PCBs. COOLSPAN® Thermally & Electrically Conductive Adhesive (TECA) Films are ideal for dissipating heat in high-frequency circuits. COOLSPAN adhesives feature outstanding thermal conductivity (6 W/m/K) and reliable thermal stability. Keep things cool, with Rogers and COOLSPAN TECA film.

CONTACT YOUR
SUPPORT TEAM
TODAY



Advanced Connectivity Solutions

www.rogerscorp.com

MEET YOUR COOLSPAN® TECA FILM SUPPORT TEAM

Leading the way in...

• Support • Service • Knowledge • Reputation

SCAN THE CODE TO GET OUR CONTACT INFO.



Greg Bull
Applications
Development
Manager
Northern
Territory
(U.S.) &
Canada



Dale Doyle
Applications
Development
Manager
Western
Territory
(U.S.)



John Dobrick
Applications
Development
Manager
Southern
Territory
(U.S.) & South
America



Scott Kennedy
Applications
Development
Manager
Eastern
Territory (U.S.)



John Hendricks
Regional
Sales Manager
Europe



Kent Yeung
Regional
Sales Director
Asia

If you are unable to scan a QR code please visit our Support Team website at www.rogerscorp.com/coolspan

CONDUCTING VERY HIGH CURRENTS THROUGH PCB SUBSTRATES AT HIGH AMBIENT TEMPERATURES

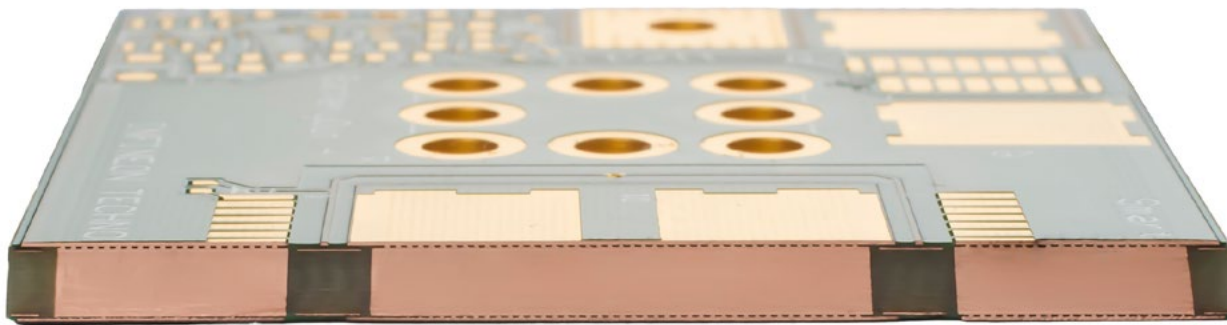


Figure 7: Inlay board with copper inlays of 2 mm thickness.

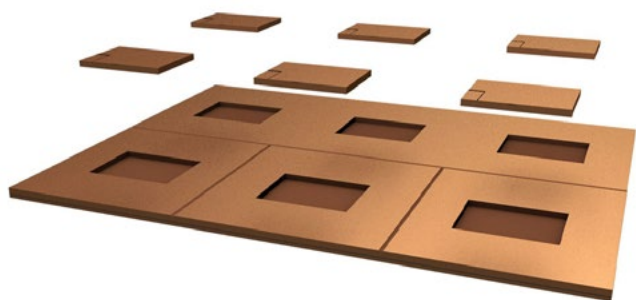


Figure 8: Lead frame with cavities for assembling power semiconductors.

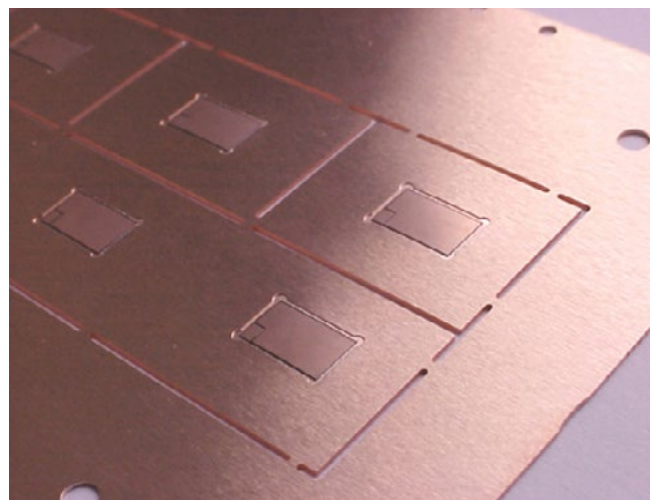


Figure 9: Lead frame with assembled MOFSETs.

surface with both sides of the inlay surface is only possible in a part of the manufactured lot. This can lead to varying thicknesses of the thermal interface material used during heat sink installation.

The inlay technology from Schweizer is different as the inlays are not pressed into a finished circuit board but are laminated into the assembly group as part of a multi-layer manufacturing process. In this process, the prepregs used equalize the occurring differences in thickness between inlay and circuit board.

The inlay can be entirely embedded in the matrix, leading to an electrically insulated inlay or it can be installed flush with one side of the entire structure of the circuit board, enabling it to be used for optimal thermal transition.

As the inlay is usually significantly wider than the component assembled on it, an immediate heat dissipation takes place within the inlay. This enlarged transition area at the heat sink leads to lower thermal resistances in the area of the thermal interface material.

Apart from thermal management, such inlay circuits can also be used for conducting high currents at low ohmic losses.

Most applications utilize the low ohmic losses as well as the optimized thermal interconnection to the heat sink, which is why the inlay board represents a high-end solution based on conventional printed circuit boards.

The Smart p² Pack

The precondition for miniaturization of high power electronics is a significant reduction of losses within the circuit and the efficient removal of power dissipation from the confined space. The p² Pack technology enables super-flat power modules with a thickness of 1–1.4 mm with reduced power dissipation and improved switching behavior as a result of using embed-

CONDUCTING VERY HIGH CURRENTS THROUGH PCB SUBSTRATES AT HIGH AMBIENT TEMPERATURES

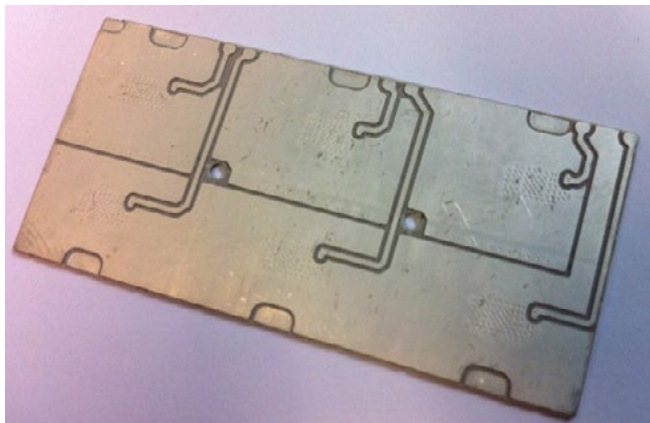


Figure 10: Connection of gate/source pads with conductor track structures.



Figure 11: Cross-section of a p² Pack with Cu-filled microvias.

ding technology and processes from the printed circuit board industry.

With the p² Pack technology, an entirely new technology for manufacturing power modules has become available. So-called lead frames form the basis for this technology. These lead frames are machined to provide cavities for the assembly of power semiconductors.

In the next step, these cavities are assembled with power semiconductors. The goal is to position the surface of the semiconductors in one level with the lead frame.

The assembled lead frames are laminated with the help of conventional PCB processes to form a 3-layer structure. This way the bond wires are replaced by a circuit board wiring layer above the chip. The gate contact is implemented with conductor tracks and the source pads have a flat design in order to achieve an electrical connection as well as favorable thermal dissipation of the power.

Contacting the upper side of the chips is done galvanically by way of copper-filled blind holes penetrating through the dielectric on the

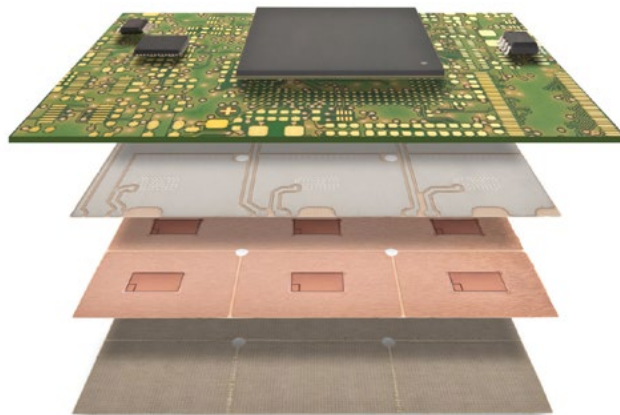


Figure 12: Exploded drawing of the Smart p² Pack functional layers.

upper side. The semiconductors must have a surface metallization that is compatible with these processes.

The design of the p² Pack is to be kept symmetric as it ensures a minimized pumping effect during thermal cycles. The solid Cu-layers above and beneath the lead frame are a design feature for double-sided cooling of the semiconductor while only the lower side must be connected to a heat sink. Depending on the lead frame thickness, up to 1/3 of the dissipated power can be distributed via the upper side and can be removed downwards through the package into the heat sink.

Smart p² Pack

The p² Pack itself can be combined with a logic control board to form a 1:1 substitute for a DCB substrate.

Due to the fact that the p² Pack has a height of only 1 to 1.4 mm, it can even be embedded in a logic control board. Very short connections between the gate driver and the gate contacts of the power semiconductors can be achieved this way. The driver module can be positioned on the control board directly above the power semiconductor while the connection to the gate is carried out with copper-filled interconnections from the outer layer to the p² Pack.

A heat sink can be mounted on the bottom of the Smart p² Pack using a thermal interface material.

CONDUCTING VERY HIGH CURRENTS THROUGH PCB SUBSTRATES AT HIGH AMBIENT TEMPERATURES

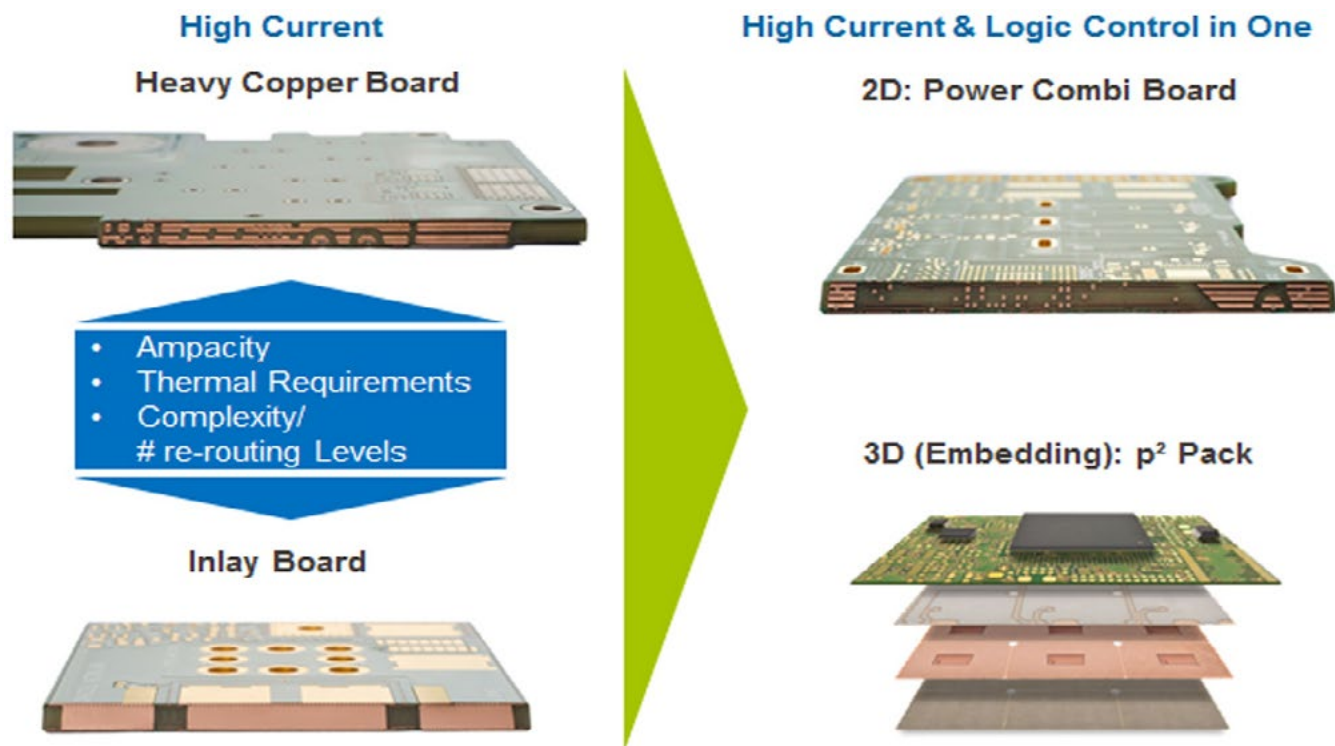


Figure 13: Overview of requirement and solution concepts.

Which technology is suitable for which task?

The technology to be used is determined by the requirements of the application.

For example, the number of grids carrying high currents determines whether a heavy copper board (many grids) or an inlay board (few grids) will be used.

If a combination of logic and power circuitry is to be implemented in a single circuit board, the Power Combi Board is available for this purpose.

The Smart p² Pack is the perfect solution if very limited installation space is available, circuit losses must be minimized and maximum electric and thermal performance is required in limited space.

Summary

Power electronics have entered the high-volume market as a result of increased electrification of the power train and auxiliary units in motor vehicles. This has pushed the demand for miniaturization and cost reduction as an electric drive has to be installed in addition to the combustion engine and as many useful additional electric

auxiliary units must be installed in the installation space that has always been very limited.

This trend requires electronic substrates capable of handling very high electric power at very low losses. Due to the limited installation space, locations with high ambient temperatures must be used as well, resulting in more demanding temperature requirements.

With the new highly temperature-resistant materials and high-current technologies described, future applications can be increasingly based on circuit board technology. **PCB**



Thomas Gottwald is director of innovation at Schweizer Electronic AG.



Christian Rößle is vice president, sales & marketing, and director of embedding/systems with Schweizer Electronic AG.

Grow with Ventec USA!

As we continue to expand our operations in the USA, we are looking for talented and dedicated people to help us turn our vision of being the best technical laminator into a reality.

Our openings include:

- Vice President of Operations (USA)
- Technical Service personnel
- Sales staff in specific territories
- QTA press operator

LEARN MORE ABOUT OUR USA EXPANSION »

If being part of our industry-leading team interests you, we invite you to join us in our commitment to the US market. Please contact Jack Pattie at 978-265-0734 or by email at jpattie@ventec-usa.

Wherever technology takes you, we deliver.

Liquid Cooling Moves onto the Chip for Denser Electronics

Using microfluidic passages cut directly into the backsides of production field-programmable gate array (FPGA) devices, Georgia Institute of Technology researchers are putting liquid cooling right where it's needed the most—a few hundred microns away from where the transistors are operating.

Robots and Us

If you follow technology news—or even if you don't—you have probably heard that numerous companies have been trying to develop driverless cars for a decade or more. These fully automated vehicles could potentially be safer than regular cars, and might add various efficiencies to our roads, like smoother-flowing traffic.

Lockheed Martin Delivers First Upgrade PAC-3 Missile Interceptors

The U.S. Army significantly upgraded its missile defense capabilities today as it accepted the first PAC-3 Missile Segment Enhancement (MSE) interceptors built by Lockheed Martin. With improved mobility and range, the new interceptors will defend against evolving threats around the globe.

The Real Martian Spinoffs Part 3: Harnessing the Power

More powerful than the mighty Saturn V that took humans to the moon, the Space Launch System (SLS), NASA's newest rocket currently under development, will have the capability to send astronauts deeper into space than ever before. With SLS and the Orion capsule, humans will no longer have to dream of walking on Mars—they finally will do it.

Electronic Interconnect Improves Customer Service with Addition of TS16949 and AS9100 Certifications

In an effort to bring a more stringent system into place, PCB fabricator Electronic Interconnect has received both their TS16949 and AS9100 certifications.

Lockheed Martin to Open Submarine Combat System Laboratory

Lockheed Martin Australia will open a submarine combat system laboratory in Mawson Lakes in November to support the company's pursuit of the Royal Australian Navy's Future Submarine project SEA 1000 Phase 1. Construction began at Mawson Lakes on July 27, 2015 and is expected to open in November. An expanded Phase 2 with a secure area is scheduled to open in the third quarter of 2016.

FTG's Circuits' Segment Posts 31% Sales Growth in Q3

The circuits' segment sales were up \$3.3M or 31% in Q3 2015 versus Q3 2014. All facilities reported increased revenues. On a year-to-date basis, circuits' sales were up \$7.4M or 23%.

Epec Hires Todd Barham as Military & Aerospace Business Development Manager

Epec Engineered Technologies recently announced the hiring of Todd Barham as Military and Aerospace Business Development Manager. Todd's main role with Epec will be to help grow the company's market share in the military and aerospace sectors.

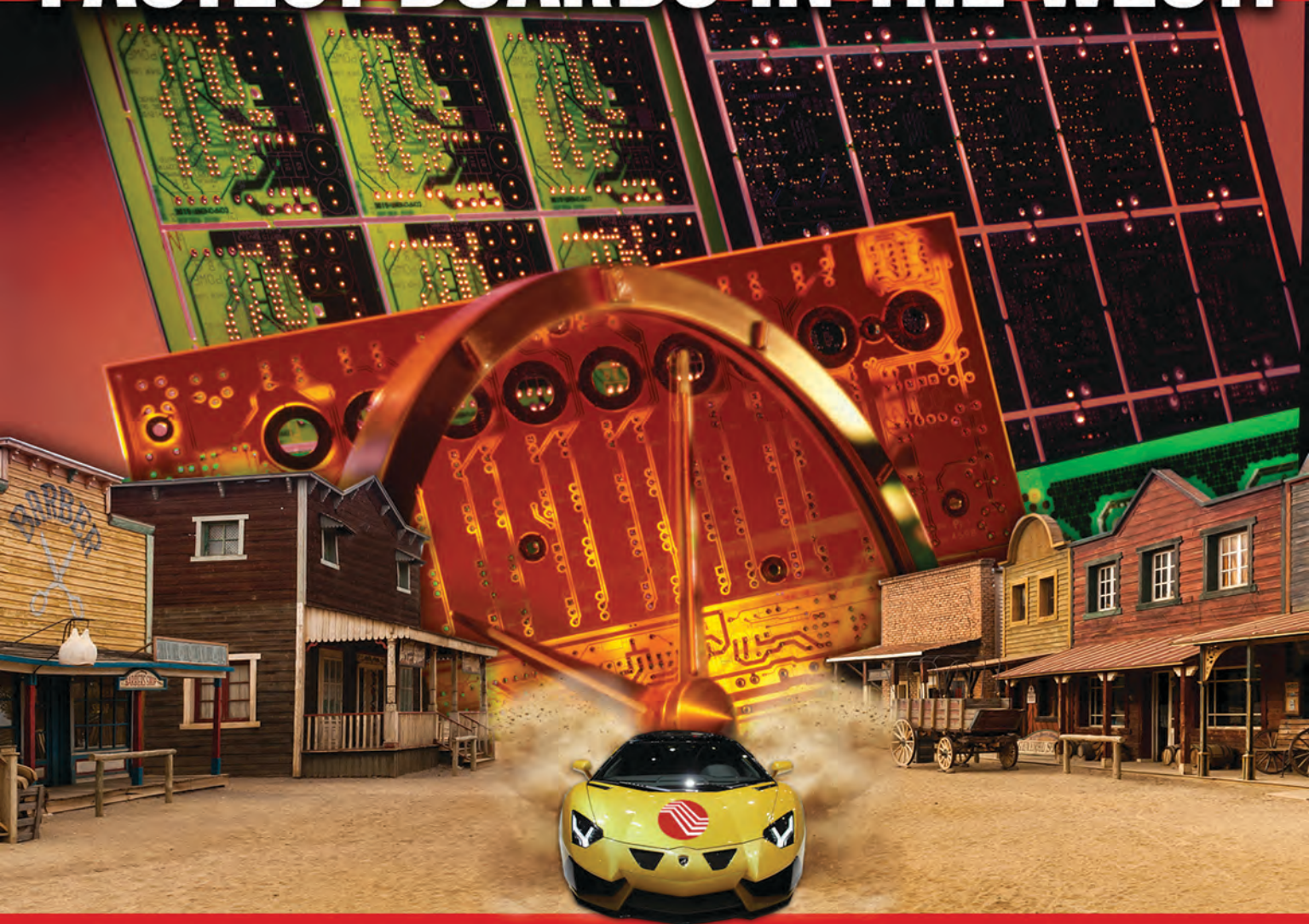
The Application of Advanced Ultrasonics in Metal Plating Processes

Most surface modification chemical treatments by their very nature contain hazardous and oxidising chemicals, and there is a major concern that these chemicals are used maliciously with the intent to manufacture explosives or formulate poisons to harm the public. Cyanide-based plating solutions and high concentrations of hydrogen peroxide used in current techniques are a significant use of these materials in industry.

UAV Market to Reach \$10B Mark by 2024

The global defense and security market for unmanned aerial vehicles will expand at 5.5% per year over this decade, from the current figure of \$6.4 billion, to \$10.4 billion by 2024, according to IHS.


FASTEST BOARDS IN THE WEST!



When Speed is a Priority
We're Quick on the ~~Draw~~ *TURN*

[MORE INFORMATION](#)

[REQUEST A QUOTE](#)

Prototron
 **Circuits**

High quality PCBs delivered fast, just another reason we are America's Board Shop

sales@prototron.com | prototron.com

Digital Imaging Revisited

by **Karl Dietz**

KARL DIETZ CONSULTING LLC

The advantages of digital circuitization techniques have been described in detail by suppliers of equipment and photoresist. Since phototool generation and conditioning are omitted, there is the advantage of shorter lead time. Small lots can be customized at no extra cost (e.g., with added date and lot number information). There may be an advantage in fine-line imaging of surfaces with poor co-planarity because of the depth of focus of the laser beam. But the biggest advantage may be the ability to “scale” (i.e., to change the dimension of each individual exposure for best fit to reference points on an underlying pattern of a multilayer structure). However, early digital imaging systems had substantial drawbacks, such as Orbotech’s DP100, which used an argon ion laser with limited radiation power, high power usage, and high cooling requirements.

For years, laser direct imaging (LDI) was synonymous with digital imaging. While most early, commercially successful digital processes involved the use of lasers, other more recent processes use non-laser light sources such as LEDs (light emitting diodes), or various types of mercury lamps, making use of more than one wavelength. Others use inkjet technology to build image patterns such as legend print, soldermask or etch resist. They all have in common the building of a pattern, pixel by pixel, and they employ digital on/off switches to form the pattern. The switch might be an optical modulator or an array of LCPs (liquid crystal polymer cells) that can be rendered translucent or opaque by addressing it with an electrical pulse.

Or the switch might be micro-mirrors on a chip, such as Texas Instruments’ Digital Micromirror Device™ (DMD), whereby tiny



Have you heard?

There's Now a New Source for an Advanced UV/CO₂ Laser Machine



- *Dual beam UV/CO₂ for processing flexibility*
- *Standard beam shaping systems*
- *Highest laser power in the industry*
- *28" x 32" table area for large workpieces*
- *High-speed digital galvanometers for greater accuracy*
- *Linear motor X - Y drives*
- *Drill, skive, and clean with dual Z-axis focus*
- *Optical camera integrated with laser galvos*
- *Win 7 OS with 21.5" touch panel*
- *Designed, engineered, and manufactured in the USA*
- *Dependable North American service centers*

NSI also distributes the
full line of Tongtai drilling
and routing machines.



MODEL SD-216
2-SPINDLE DRILLING MACHINE



NANOSYSTEM
nanosystem-usa.com

contact us

Nano System, Inc.

Milpitas, CA (408) 935-2270

Manchester, NH (603) 645-1500

sam.sekine@nanosystem-usa.com

DIGITAL IMAGING REVISITED

mirrors are addressed with an electric pulse so that the mirror is either tilted to direct the light to the substrate or away from the substrate. Or, in the case of ink jetting, it could be a piezo-electric membrane that changes its shape upon receiving an electrical pulse, thus causing the formation of an ink droplet, or it could be a digitally modulated electrical field that selectively deviates electrically charged ink droplets from a continuous stream of droplets.

“They all have in common the building of a pattern, pixel by pixel, and they employ digital on/off switches to form the pattern.”

More recently, additional developmental and commercial digital imaging systems have been marketed.

The French supplier of imaging systems, Altix-Automata-Tech, first introduced its ADIX-System at productronica 2013. It is based on an advanced high-power LED radiation source (ALDS), a dual multi-wavelength UV-LED, and DMDs. The system is suitable for rigid and flex substrates and has automatic handling options. Earlier systems using DMDs include:

- ORC's DI-Impact (formerly by Pentax)
- Hitachi's DE imagers DE-H, DE-S, and DE-F series
- MIVA Technologies GmbH, Germany, Miva 2600X Direct Imager
- Maskless Lithography's DMD-based system (USA), using a mercury arc light source
- Aiscent Technologies Inc. (Canada)

The Korean company AJUHITEK entered the market with its EP digital imager series that is using a laser diode radiation source with the wavelength of 405 nm.

HAN's Laser is the only Chinese supplier of direct imagers to the best of my knowledge.

The Japanese direct imager suppliers ADTEC, DNS, ORC and Via Mechanics continue to introduce improved systems.

The Swiss supplier PrintProcess introduced its Apollon DI-A11 direct imager that offers automated loading and unloading. It offers automatic image scaling and resolves reliably 1 mil features.

KLEO Halbleitertechnik GmbH, Germany, has supplied direct imagers since 2009, with systems in production in Germany and Switzerland. The KLEO-LDI-System CB20HV-Twinstage uses a 405 nm wavelength laser diode. The 405 nm radiation source is dominant in Asia. Photoresists (dry film and liquid) suitable of exposure at 405 nm are available from Hitachi, DuPont, Atotech, Eternal, Kolon and Elga Europe.

The UV-P100 UV-LED direct imager by Limata GmbH (Germany) was developed for prototype and short run production. It can use conventional dry film and soldermask. Light source life exceeds 10,000 hours. Max panel size is 650 x 540 mm². Resolution of 50 micron features is obtained. Automated load/unload is available, and side-to-side registration is achieved with cameras and registration target holes.

Orbotech's Nuvogo DI System is designed for mass production of advanced HDI/flex and rigid-flex applications, according to Orbotech. The Nuvogo™ 800 is compatible with nearly all resist types. The MultiWave Laser Technology™ uses a multi wavelength laser beam of high intensity so that lower cost resist with standard photosensitivity can be used for high throughput (up to 7,000 panels/day/line) with optimal line structure. **PCB**



Karl Dietz is president of Karl Dietz Consulting LLC. He offers consulting services and tutorials in the field of circuit board & substrate fabrication technology. To view past columns or to reach Dietz, [click here](#). Dietz may also be reached by phone at (001) 919-870-6230.

**APEX
EXPO[®]**
IPC 2016

FORWARD THINKING

FOR TOMORROW'S TECHNOLOGY

Unparalleled Access

What awaits you on the IPC APEX EXPO 2016 show floor? The largest concentration of advanced technologies from the electronics industry supply chain — PCB fabricators, designers, OEMs, EMS companies and more. If you want to experience their forward thinking, you need to be here.

IPC APEX EXPO 2016 is where ingenuity will be unveiled.

Prepare for tomorrow in 2016. Meet customers, network and be inspired by all that you experience on the show floor.

Forward thinking begins at www.IPCAPEXEXPO.org.

LAS VEGAS/NEVADA

LAS VEGAS CONVENTION CENTER

CONFERENCE & EXHIBITION: **March 15-17**

MEETINGS & COURSES: **March 13-17**

www.IPCAPEXEXPO.org



Electronics Industry News

Market Highlights



Highly Flexible, Wearable Tactile Sensor for Robotics, Electronics and Healthcare Applications

A team of scientists from the National University of Singapore (NUS) Faculty of Engineering has developed a wearable liquid-based microfluidic tactile sensor that is small, thin, highly flexible and durable. Simple and cost-effective to produce, this novel device is very suitable for applications such as soft robotics, wearable consumer electronics, smart medical prosthetic devices, as well as real-time healthcare monitoring.

Singapore PC Market Growth Driven by Mobile PCs in 1H of 2015

PC shipments in Singapore totaled 588,300 units in the first half of 2015, a 12% increase over the same period last year, according to Gartner Inc.

Outsourcing Manufacturing to China Results in High CO2 Emissions

Despite the increasingly fervent debate regarding the trade relationship between China and the United States and its implications for the global political environment, it is evident that manufacturing goods in China and shipping them to developed countries has real-world consequences, particularly for the environment.

Copper Clad Laminate Industry has Entered New Round of Growth

The CCL industry has entered a new round of growth in recent years, and two regions in Asia—China and Southeast Asia—have become the fastest-growing. Relevant manufacturers have successively taken measures like capacity expansion and acquisitions to strengthen their CCL business.

Car OEM Telematics Leads IoT Segments, Generates \$60B of Service Revenues in 2020

While 4G networks would be preferred by automakers to power the connected car, 3G networks will carry the data driving the majority of its global telematics and infotainment services revenues.

In fact, it will be after 2020 that 4G becomes the leading connection technology for OEM telematics revenues.

Survey Reveals IoT Opportunity

While the Internet of Things (IoT) continues to evolve and expand, moving from the planning stage to execution, the momentum is quantifiable. According to a new survey from IDC, 73% of respondents have already deployed IoT solutions or plan to deploy in the next 12 months.

New Color Technology Displays to Comprise 25% of Total Display Shipment Area in 2020

Wide-color gamut flat-panel displays are expected to grow from 3% in 2015 to 25% of the display market in terms of area by 2020, according to IHS. Color gamut refers to the ability of a digital display to reproduce colors as they are seen by the naked eye.

Microcontroller Market Growth Tied to Rise in IoT Applications

The market for MCUs used in connected cars, wearable electronics, building automation and other IoT applications is expected to grow at an overall CAGR of 11%, from \$1.7 billion in 2014 to \$2.8 billion in 2019, according to IHS.

Chinese Handset OEMs to Increase Demand for Smartphone Sensors

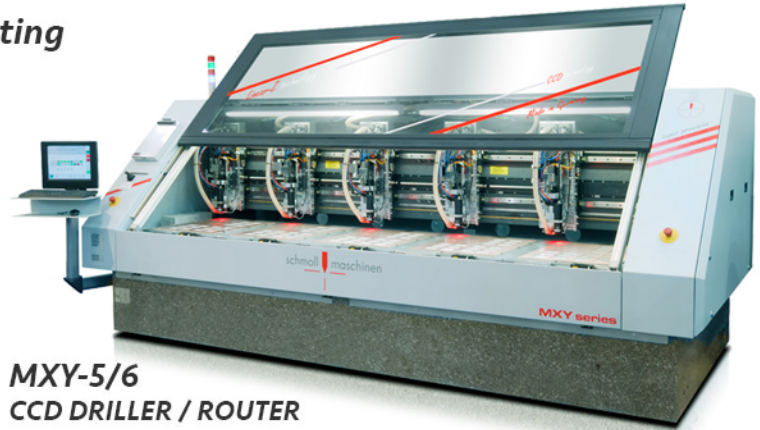
Chinese OEMs have proved willing to try any new technology that allows them to compete more successfully. Of the many Chinese handset manufacturers, Xiaomi will consume the greatest number of sensors in 2019, according to IHS.

Researchers Take First Steps to Create Biodegradable Displays for Electronics

University of Missouri researchers are on the path to creating biodegradable electronics by using organic components in screen displays. The researchers' advancements could one day help reduce electronic waste in the world's landfills.

Schmoll Highly Precise CCD Drilling & Routing

- Accurate optical registration with CCD cameras
- Outer layer process uses target marks on PCB surface
- Choice of target mark geometry
- With XY-offset evaluation, shrinkage, stretch values and rotation can be determined
- Corrected values can be used for drilling or routing
- Multizone Measurement – Individual alignment for certain sections of the PCB for higher precision



**MXY-5/6
CCD DRILLER / ROUTER**



**MDI-DT
DIRECT IMAGING**

Schmoll MDI Micromirror-Digital-Imaging

- MDI-DT: Double Table for high throughput
- Cost-efficient and high-quality digital-direct-imaging
- High-power UV-LEDs and DMD-technology
- Operator friendly concept with small footprint (2.47m²)
- Application options for inner layer, outer layer and solder mask
- Two head designs available
- Flexible number of heads and head distances for shortest exposure times
- Dual wavelength concept with high performance

To learn more, contact Dave Howard at: +1 714-379-5090



Check out our completely redesigned website.

Click here for our Printed Circuit Board section.

Alliance partner web sites:

- www.schmoll-maschinen.de
- www.buerkle-gmbh.de
- www.bacher-systems.com
- www.impex.co.at
- www.lhmt.de

BURKLE
NORTH AMERICA, INC.
www.burkleamerica.com

Bürkle North America, Inc.

11105 Knott Ave. Ste A
Cypress, CA 90630

TEL: 714-379-5090

FAX: 714-379-5092

As Vias Shrink, Opportunities for Laser Drilling Expand

by Dirk Müller, Ph.D.
COHERENT INC.

While lasers have long been employed for via drilling in PCB fabrication, mechanical drilling still remains the predominant production technology. However, as via diameters shrink to support various advanced packaging techniques, mechanical drilling becomes more expensive, and ultimately technologically unfeasible. A variety of laser technologies are now poised to step in to extend production via drilling down to the micron level. This article reviews the various laser sources that are available to support the latest packaging technologies as they become more widely adopted, and describes the characteristics and capabilities of each.

CO₂ Lasers

Carbon dioxide (CO₂) lasers have been used in PCB via drilling for more than two decades and currently service about 20% of the market. The reason for this relatively low market penetration is simple. Even though CO₂ lasers are a non-contact method that eliminates the need for frequent tool replacement, their sweet spot is at hole diameters around 100 µm diameter and below. As the industry transitions to smaller vias, mechanical drill replacement costs start to increase exponentially, and the use of CO₂ lasers will expand significantly to cater to the growing demand for ever smaller micro-vias.



CO₂ lasers drill vias through a thermal interaction. That is, the material absorbs the infrared light output of the CO₂ laser, which heats it until it vaporizes. Many dielectrics absorb well in the far infrared, while nearly all metals are highly reflective at these wavelengths. As a result, copper layers act as a natural stop when drilling with a CO₂ laser. In order to drill through copper (such as a top clad layer), it must first be oxidized to create a dark patina which absorbs the laser light.

While the CO₂ laser can readily produce a smaller via than a mechanical drill, there are limitations on the smallest via diameter it can reach. One limit is caused by light diffraction. Specifically, the smallest focused spot size to which a laser beam can be focused is directly related to its wavelength. Longer (e.g., far infrared) wavelengths, cannot be focused as finely as visible or ultraviolet wavelengths. Also, the thermal nature of the light/material interaction produces a small heat affected zone (HAZ)



Get the Job Done Without Breaking the Bank AND Reduce Cycle Time!

OS-253 Solder Stripper is a great way to increase productivity and minimize down-time. Long-lasting bath reduces tank shut down for cleaning / makeup. Easy waste treatment minimizes time and a built-in antioxidant allows indoor storage without having to deal with oxidized copper!

Call or email us today to place your order, you will be glad you did.

OS-253 Solder Stripper

- Economical
- High Capacity
- Fast
- Leaves Pristine Copper Substrate
- Fume Control
- Minimal-to-no Sludge

For over 45 years, our customers have come to rely on us for products that work extremely well. This, coupled with our commitment to personal service, is what makes us really outshine our competitors. We look forward to meeting you.



insidesales@os-tech.com

CALL: 1-888 OSTECH1 • 1-888 678 3241

AS VIAS SHRINK, OPPORTUNITIES FOR LASER DRILLING EXPAND

around the drilled hole, limiting how close it can be placed to other features. As a result, the practical lower limit on via diameters for CO₂ lasers is about 70 μm . But what if the hole diameter needs to be smaller than 70 μm ?

CO Lasers

This is where carbon monoxide (CO) lasers come in. This type of laser was first developed about 50 years ago, but lifetime and reliability issues prevented this technology from becoming commercially viable. However, in the past year, the advent of new technology is making CO lasers practical, yielding products with very high output powers, and which demonstrate lifetimes in the thousands of hours range. The reason that CO lasers are of interest is that they output over the 5–6 μm spectral range, or about half the CO₂ wavelength of 10.6 μm , allowing for a smaller focused spot.

For via drilling, this shorter wavelength provides several important advantages. For example, it lowers the minimum via diameter that can be produced down to about 35 μm (due to diffraction). But even when producing larger diameter vias, the CO laser has an edge over CO₂. Specifically, the focusing lens used to achieve a 70 μm diameter via with a CO laser has twice the focal length of the lens required to achieve the same via size with a CO₂ laser. This longer focal lens provides greater depth of focus, which increases the field of view. The longer focal length and increased depth of field facilitate an increase in scanning speed, and therefore faster via production, with the shorter wavelength CO laser.

Because the CO laser can be focused to a smaller spot, it's easier to reach higher power densities with it than with a longer wavelength

CO₂ laser of the same power. (Since the CO laser has roughly half the wavelength of the CO₂, it forms a spot size that is half as big, and which therefore has one-quarter the area, or four times the power density.) Conversely, achieving a given power density requires only one-fourth the total output power with a CO laser as with a CO₂ laser. Depending upon the exact parameters of a particular via drilling task, this makes it possible to use a much lower power CO laser for a specific job. This lowers the cost of the laser and the cost of the electricity and reduces the carbon footprint for the process.

In addition to the optical benefits, there are also differences in light absorption characteristics at the shorter wavelengths. This can be especially true in the case of polymers, which have an infrared absorption spectrum that consists of numerous sharp peaks. As a result, some polymers exhibit high absorption at 10.6 μm , and much less in the 5 μm to 6 μm band, and vice versa.

Another important material which exhibits very different absorption characteristics at 10.6 μm and 5 μm is glass, a material now of great interest for interposers in 2.5D and 3D advanced packaging techniques. Specifically, although glass has much lower absorption at the shorter wavelength, the use of the shorter wavelength actually produces superior results. This is because the lower absorption enables the CO laser beam to penetrate farther into the material. Together with the superior focusing ability of the 5 μm wavelength, this enables very small holes with high aspect ratios to be drilled in glass with precise depth control. The photo shows 35 μm diameter vias drilled in glass. Vias of this size and quality simply couldn't be produced with a CO₂ laser in glass.

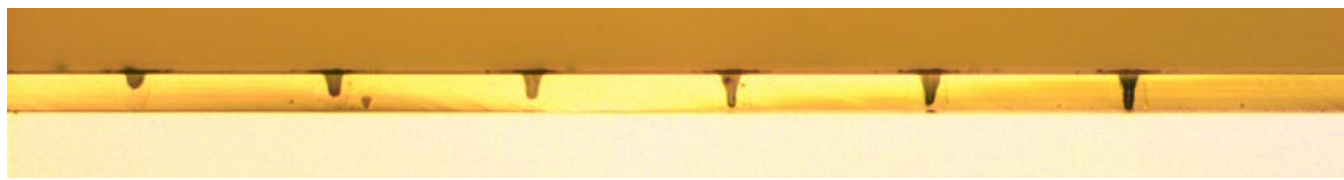


Figure 1: A 50 μm -thick glass substrate drilled with successively more pulses from a CO laser demonstrates the ability of this source to drill glass interposers. CO₂ drilling of this material typically results in heat-related cracking.



**THE RIGHT APPROACH
CONSULTING_{LLC}**

If you want your business to:

- Reduce cycle times
 - Increase yields
 - Have better quality systems
- ...and improve profits,*

I can help.

**FREE
DOWNLOAD:
ISO 9001:2015
READINESS
CHECKLIST**

CLICK TO DOWNLOAD



TheRightApproachConsulting.com

AS VIAS SHRINK, OPPORTUNITIES FOR LASER DRILLING EXPAND

UV Solid State Lasers

In addition to CO₂ lasers, diode-pumped solid-state (DPSS) lasers operating in the ultraviolet (UV) at 355 nm are a well-established source for drilling microvias, and are employed in other microelectronic fabrication tasks, such as wafer and micro-SD card singulation. The UV output of these lasers delivers two important benefits for micro-via drilling applications. First, with a wavelength that is over ten times smaller than CO₂ and CO lasers, plus their excellent beam quality, these lasers can be focused down to even smaller spot sizes. Second, shorter wavelengths are absorbed more strongly than infrared light by the vast majority of materials, including both metals and dielectrics. Because they don't penetrate as far into the bulk material during processing, they deliver the ability to more precisely control the depth of the removed material, and produce a much smaller heat affected zone (HAZ).

Together, these factors make UV DPSS lasers the first choice for producing microvias in the 25–35 μm diameter range. These applications also benefit from the ability of the UV laser to drill both copper and composite lasers. They are generally not used for vias above about 70 μm , since these lasers typically have a higher cost of ownership than infrared (CO and CO₂) lasers.

One major limiting factor in the overall lifetime and service frequency for UV DPSS lasers is the frequency tripling crystal. Specifically, this is the non-linear optical element that converts the native, near infrared output of the solid-state laser crystal (typically at about 1 μm wavelength) into the UV. There are two basic configurations in which this crystal can be used. It can be placed intracavity (within the laser resonator) or external to the laser cavity. Intracavity frequency tripling more readily delivers high output power than external cavity tripling. However, exposing the crystal to the higher optical powers ex-

perienced within the cavity also significantly shortens its lifetime and reduces service intervals for a given power rating. Instead, Coherent UV DPSS lasers for microvia drilling use external cavity tripling in order to ensure the highest possible reliability. Using this approach, Coherent is able to supply UV lasers with up to 40W of power that operate for more than 10,000 hours without a crystal change, which is more than sufficient for current microelectronics processing tasks.

Excimer Lasers

Excimer lasers are another, even deeper UV source (usually at 308 nm or 248 nm), although they have vastly different output characteristics than DPSS lasers, leading them to be employed for microvia drilling in a very different manner. Specifically, the pencil-shaped beam

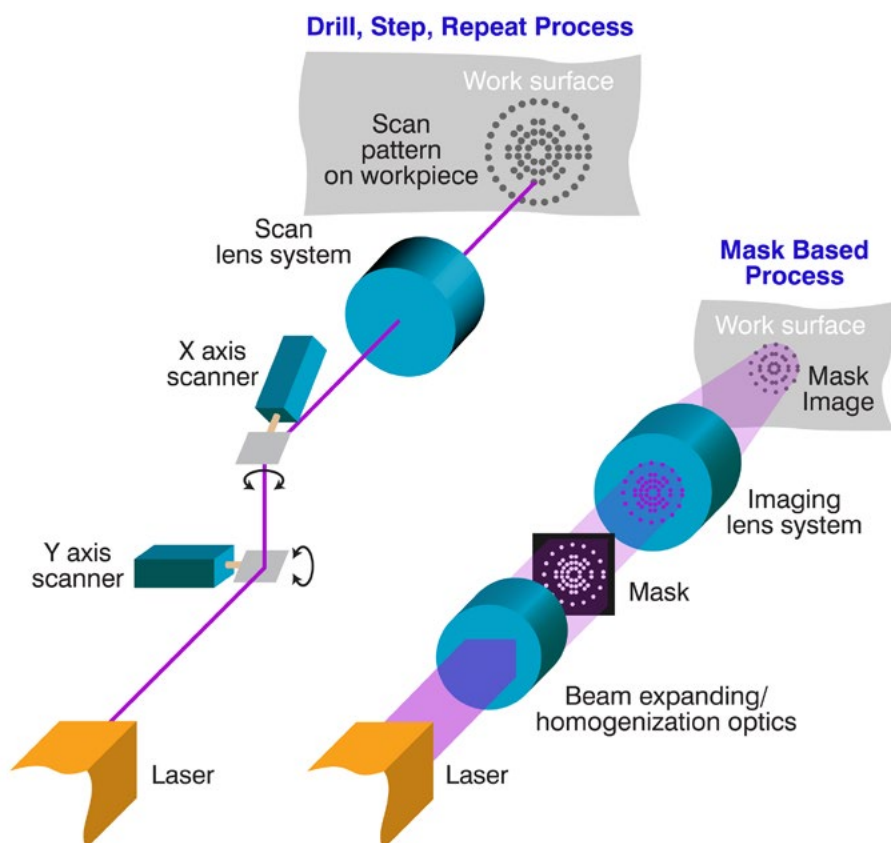


Figure 2: Schematic illustrating the difference between the direct write and mask-based writing technique for laser via drilling.

INVOTEC GROUP LTD

Tamworth, Staffordshire, United Kingdom



Overview

Contact

Specs

About

Videos

Photos

Brochures

News

From design to finished board manufacture, we deliver world class products from our UK facilities.

Markets: Automotive, Communication, Industrial, Medical, Military/Aerospace, Other: Satellite, Motorsport, Digital Broadcasting, Secure Communications, Encryption, FTR/NPI Commercial, FTR/NPI LED

Board Types: Single-sided, Double-sided, Multilayer, Flex, Rigid-Flex, Other: Internal & External Heatsinks and Heat Exchangers

Mfg Volumes: Prototype, Small, Medium

Specialities: 3D Features, Blind/buried vias, Backplanes, Bonded heat sinks, Carbon contacts, Controlled depth drilling, Controlled depth milling, Controlled Impedance, Edge plating, Embedded Components, Filled/plugged vias, Heavy copper, HDI, Laserless vias, Laser ablation, Printed Electronics, Sequential lamination, Signal integrity, Surface mount PCBs, Thermal management, Thermal reliability, CTE Restraint, Thermal management, High layer flex-rigid, HDI, Rigid-Flex, Mixed Finishes, Mixed materials, IPC-9100, IPC-6012 class 3, IPC-6013 class 3, ISO 9001, ISO 14000, NADCAP, ROHS compliance, Other: SC21 Bronze Award



Featured Showcase

[Click here to see a demo](#)

Why YOU should Showcase:

- Capabilities listing for advanced search functionality
- Specialties and certifications listing
- Ability to upload brochures and videos
- Quick and easy "Contact" and "RFQ" buttons
- News, web and contact links

Click to see a partial list of registered OEMs!

www.thepcblist.com

AS VIAS SHRINK, OPPORTUNITIES FOR LASER DRILLING EXPAND

from a DPSS UV laser is typically utilized in a drill, step, and repeat mode. In this mode, the focused laser beam is moved to a desired hole location, the laser drills the hole and, once finished, the laser beam is moved to the next hole location, all in sequence. In this approach, the throughput is linearly dependent on the number of vias being drilled.

In contrast, excimer lasers produce a large rectangular-shaped beam that is ideal for use in a mask-based writing process. A photomask containing the pattern of vias for a panel, or region of a panel, is illuminated with the laser. This photomask is then re-imaged onto the work surface, and all holes within the beam section are drilled simultaneously.

In mask-based writing, laser fluence and pulse frequency dictate the maximum field size that can be exposed at once, but not the total number of holes that can be produced within this field. Thus, as pitch size decreases (and the number of holes produced in a given area increases), parallel, mask-based drilling becomes increasingly efficient. In fact, the parallel drilling rate increases with the square of the pitch size. This makes it an increasingly attractive alternative as feature size and spacing decreases, and tends to “future proof” the technique as via diameter and pitch decrease over time. Because of the higher capital cost of excimer lasers, these tools typically make economic sense at production rates around 50–100 panels per hour or higher, or if the desired feature sizes get down to 5–10 μm .

Because of their short wavelength output, excimer lasers have similar processing characteristics to UV DPSS lasers. Specifically, there is strong absorption by most materials, both metal and dielectrics, which allows them to produce micron-scale feature sizes with nearly zero HAZ.

Our laboratory has also investigated the use of excimer lasers for via drilling in glass interposers. In these tests, 25 μm diameter holes, with a pitch (hole-to-hole spacing) of 50 μm , were produced in glass substrates ranging in thickness from 100–300 μm . The laser wavelength of 193 nm was used, with a 600 mJ pulse energy, in a mask-based process that produced a fluence of 7 J/cm² at the work surface. The 193 nm wavelength was chosen because glass exhibits strong absorption at this wavelength.

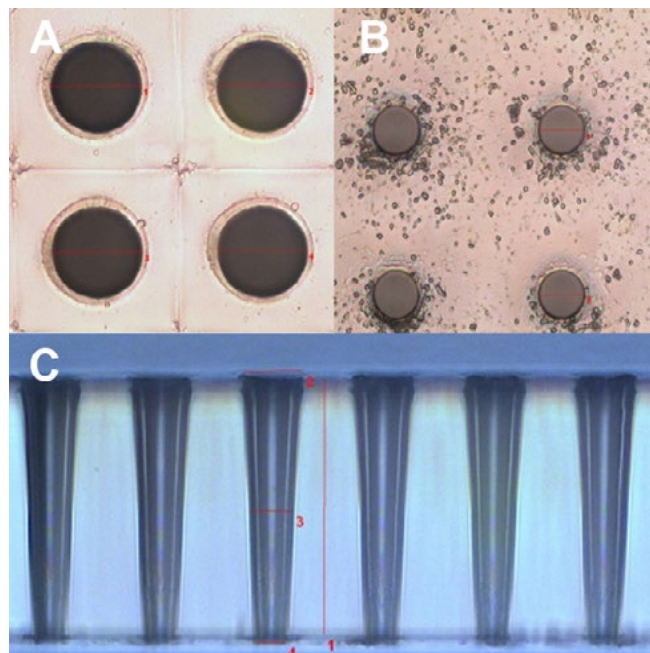


Figure 3: Excimer laser (193 nm) vias drilled into glass. A) The 25 μm diameter entrance hole; B) the exit hole; and C) the cross-sectional view.

Clean, round, symmetric vias were successfully produced in all the thicknesses tested using a total of 700 pulses or less. Hole taper was seen in the higher thicknesses, but sequential drilling from both sides of the glass reduced this effect substantially. This is relatively easy, since the transparent glass makes it easy to register fiducial marks on one side of the glass when it is flipped over for drilling from the second side. Overall, this testing showed that vias down to 5 μm diameter could be successfully produced.

In addition, mask-based excimer laser ablation provides excellent control of feature depth and wall angle. Unlike CO₂ laser via drilling, which usually takes just three laser pulses, excimer laser drilling utilizes numerous pulses, each of which removes just a small amount of material. Thus, via depth is precisely controlled by varying the number of laser pulses delivered. Wall angle is highly dependent upon laser fluence, so this parameter can also be varied to produce exactly the desired results.

In conclusion, most of the advanced packaging techniques that are currently on line, or becoming popular, require microvias that are beyond the capabilities of mechanical drills. In

AS VIAS SHRINK, OPPORTUNITIES FOR LASER DRILLING EXPAND

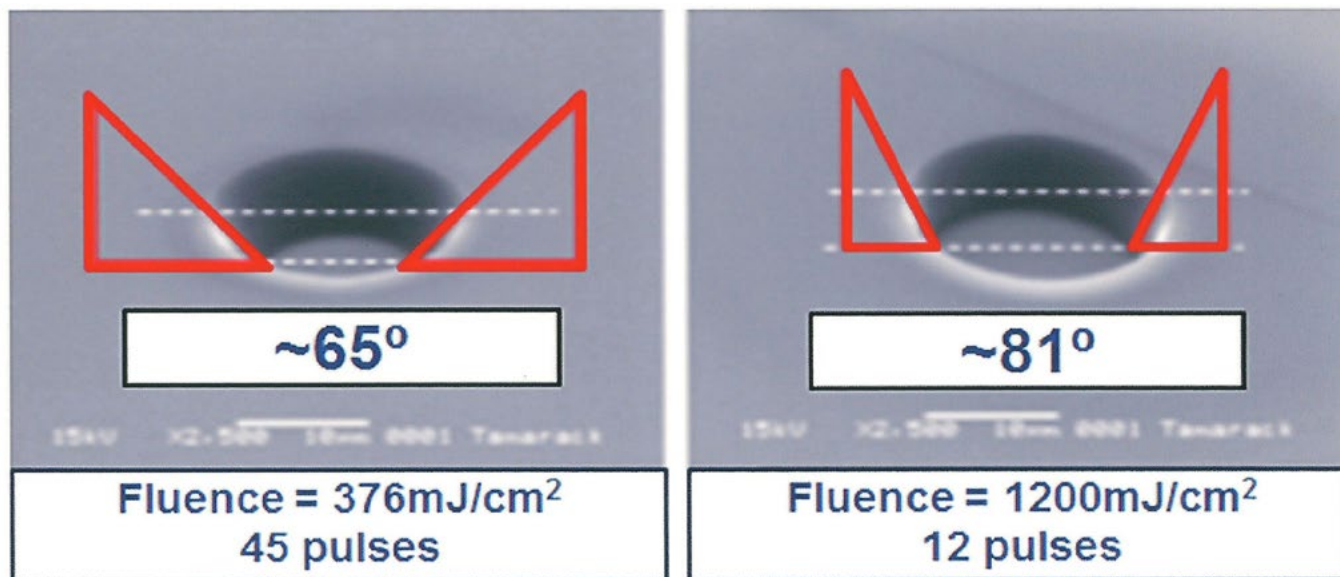


Figure 4: Varying laser fluence enables manipulation of feature side-wall angles, which can be important in subsequent deposition steps.

response to this need, laser manufacturers have already developed a variety of tools to optimally support next generation PCBs, substrates and interposers for today's advanced packages, and which deliver the performance overhead to support expected miniaturization trends in all these areas for the foreseeable future. **PCB**



Dirk Müller, Ph.D. is director of marketing at Coherent Inc. To reach the author, [click here](#).

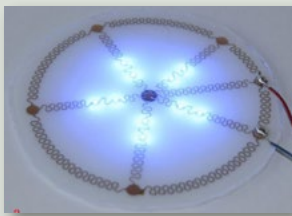
Imec and Ghent University Present Thermoplastically Deformable Electronic Circuits

At the recent meeting of the International Microelectronics Assembly and Packaging Society (IMAPS 2015), imec and CMST (imec's associated lab at Ghent University) presented a novel technology for thermoplastically deformable electronics enabling low-cost 2.5D free-form rigid electronic objects. The technology is under evaluation in Philips LED lamp carriers, a downlight luminaire and an omnidirectional light source, to demonstrate the potential of this technology in innovative lighting applications.

Thanks to its energy-efficiency, excellent light quality, and high output power,

light emitting diode (LED) technology is becoming the sustainable light source for the 21st century. But in addition, it also allows to design unprecedented, innovative lighting solutions. Imec and CMST's new thermoplastically deformable electronic circuits now add a new dimension to the possibilities to fabricate novel lamp designs as well as smart applications in ambient intelligence and wearables.

The production process was developed in collaboration between the industrial and academic partners involved in the FP7 project TERASEL: imec, CMST (Ghent University), ACB, Holst Centre, Niebling Formtechnologie; Sintex NP and Philips Lighting BV. TERASEL is a European effort focusing on the development, industrial implementation and application of large-area, cost-effective, randomly shaped electronics and sensor circuit technologies.



ATTENTION BUSINESS OWNERS:

IQ.
TEST
TODAY



BRING YOUR
BRAIN

► **CLICK HERE TO TAKE THE BizBrain IQ TEST**



CAN TECHNOLOGY BE TOO DISRUPTIVE?

as disruptive, but there is no doubt that breakthrough technologies and novel usage of conductive polymers is occurring. Conductive plastics conduct electricity in comparison to normal insulating plastics. Conductive plastics are used in countless applications in many industries because they are easy to extrude or injection mold into desired shapes and sizes.

“Conductive polymers are already used in fuel cells, computer displays and microsurgical tools, and are now finding applications in the field of biomaterials,” reports *Acta Biomaterialia* magazine. “These versatile polymers can be synthesized alone, as hydrogels, combined into composites or electrospun into microfibres. They can be created to be biocompatible and

.....

“The automobile companies that will thrive in the coming decades are the ones that embrace technological advances. Consumers now crave a vehicle loaded with all the electronic goodies it can hold.”

.....

biodegradable. Conductive polymers are being used as biomaterial for tissue engineering. “Their conductive nature allows cells or tissue cultured upon them to be stimulated, the polymers’ own physical properties to be influenced post-synthesis and the drugs bound in them released, through the application of an electrical signal. It is little wonder that these polymers are becoming very important materials for biosensors, neural implants, drug delivery devices and tissue engineering scaffolds.”

To date, conductive polymers have had few large-scale applications; however, advances in the technological development of conductive polymers are leading to their incorporation in batteries, super capacitors, biomaterial, solar

cells, flexible transparent displays, electromagnetic shielding, stealth aircraft coatings and more.

The automotive industry has been subject to dramatic disruptions since the first steam powered automobile debuted in 1768. A prime example of a disruptive trend is the Ford Model T. When the Model T was first available to the public in 1908, the market for horse-drawn carriages diminished, and the market for automobiles took off. Today an average new car has 30 computer processors with assisted parking, voice recognition, and GPS functions more and more common. Hybrid and electric cars are on the rise and automotive design is benefitting from modern materials and improved metals.

The automobile companies that will thrive in the coming decades are the ones that embrace technological advances. Consumers now crave a vehicle loaded with all the electronic goodies it can hold. To satisfy this craving, manufacturers have been loading up even standard models with on-board GPS systems, hands-free phone consoles, wireless Internet, satellite radio, cameras and DVD monitors. In the process, they are also packing on the pounds. At the Consumer Electronics Show, Ford CEO Mark Fields said “we view ourselves not just as a car and truck company but also as a mobility company.”

Today, the trend of lightweighting holds heavyweight importance. Analysts predict that lightweighting, the process of reducing weight for improving performance and improving fuel efficiencies, will become a \$300 billion annual market as global trends point to CO₂ reduction and resource efficiencies as being vital to meeting regulatory and industry mandates in the transportation sector. New materials development will be the driver in this trend.

For example, Ford’s 2015 model F-150, which accounts for 1 in 20 cars sold in the U.S., is now 700 pounds lighter than its 2014 model with aluminum alloy replacing the heavier steel frame. The federal government’s new Corporate Average Fuel Economy standards (CAFE) require automakers to raise the average fuel efficiency of new cars and trucks to 54.5 mpg by 2025.

The electrically assisted vehicle can certainly meet or exceed the CAFE requirements, but these vehicles carry their own weight issues, as

MERELY SURVIVE? OR DOMINATE.



IPC now delivers

online exams

through our global network of
licensed training centers.

**Get improved accuracy,
increased security and
immediate results.**

Evolve to New Standards Revisions with **IPC Certification Programs**

Success in the electronics industry happens when companies—and individuals—take every opportunity to push themselves to climb to a higher level of performance. Well, this is one of those opportunities. **IPC has updated our most popular standards to the latest industry requirements, including IPC J-STD-001F, *Requirements for Soldered Electrical and Electronic Assemblies* and IPC-A-610F, *Acceptability of Electronic Assemblies*.** The F revisions will help your company dominate through your commitment to outstanding quality assurance and rigorous performance standards. And, among the electronics supply chain, you will raise your profile while you improve communications with your partners.

Now is the time to evolve. Go to ipc.org/evolve to get your IPC specialists or non-certified operators certified on IPC's New Standards Revisions and find your closest IPC Licensed Training Center.



CAN TECHNOLOGY BE TOO DISRUPTIVE?

batteries and electrical systems add hundreds of pounds to the vehicle.

More electronics add another problem that needs to be addressed: electromagnetic interference (EMI). Conductive resins will play an ever increasing role in the lightweighting industry. Certain companies are fighting automobile obesity by utilizing conductive hybrid plastics as EMI shielding solutions. Integral Technology's patented material utilizes long fiber technology shields high-voltage components and has also developed numerous applications for connectors, covers, and enclosures. Other measures are the joint development of shielded cable with Delphi Automotive. We are able to provide the same shield effectiveness as the aluminum or cast aluminum parts while providing on average a 60% weight savings. Who says you can't have your Bluetooth cake and eat it too?

Evangelos Simoudis, managing director at Trident Capital, in an article on Enterprise Irregulars, states that "in the next 10 years we will create more innovations that will impact the automotive industry than we have created

in the previous 100" and that these "disruptive innovations are coming from companies outside the traditional automotive ecosystem. The car as a computer on wheels is disruptive and enables the emergence of a completely new ecosystem and value chain."

Disruptive innovation creates new markets, disrupts existing markets and replaces prior technology, thereby enabling existing markets to be productive, sustaining and value-driven. While new technology disrupts the status quo, technology can never be too disruptive. As President Obama said, "Change will not come if we wait for some other person or some other time. We are the ones we've been waiting for. We are the change that we seek." **PCB**



Doug Bathauer is CEO of Integral Technologies.

Walking Robot Developed at Oregon State University

A study by engineers at Oregon State University suggests that they have achieved the most realistic robotic implementation of human walking dynamics that has ever been done, which may ultimately allow human-like versatility and performance.

The system is based on a concept called "spring-mass" walking that was theorized less than a decade ago, and combines passive dynamics of a mechanical system with computer control. It provides the ability to blindly react to rough terrain, maintain balance, retain an efficiency of motion and essentially walk like humans do.

As such, this approach to robots that can walk and run like



humans opens the door to entire new industries, jobs and mechanized systems that do not today exist.

The findings on spring-mass walking have been reported for the first time in IEEE Transactions on Robotics, by engineers from OSU and Germany. The work has been supported by the National Science Foundation, the Defense Advanced Research Projects Agency and the Human Frontier Science Program.

The technologies developed at OSU have evolved from intense studies of both human and animal walking and running, to learn how animals achieve a fluidity of motion with a high degree of energy efficiency. Animals combine a sensory input from nerves, vision, muscles and tendons to create locomotion that researchers have now translated into a working robotic system.

Why choose Fein-Line?

Because there is a Fine Line between winning ...and the alternative.

After more than 44 years in the industry, just about everyone knows the name Dan (Baer) Feinberg.

There are few in our industry that have his experience and expertise in just about every aspect of the business. Dan knows what works, and perhaps more importantly, what doesn't.

When additional expertise is needed, or when senior management just needs an independent opinion, companies large and small alike get the guidance of Fein-Line Associates, especially in the areas of New Product Market Entry and M&A Due Diligence.

In our business, there's a lot on the line, not just sometimes, but every time. The line between success and the alternative can be razor thin. That's why winning companies choose Fein-Line time after time.



Dan (Baer) Feinberg
Fein-Line Associates

**Sales Training General Marketing Assistance · New Product Market Entry
Merger and Acquisition Due Diligence · Printed Circuit Technology assessment
Market Research (It may work but will it sell) · Expert Witness assignments
Technology Transfer**



Fein-Line Associates, Inc.

P.O. Box 73355, San Clemente, CA 92673-0112

(949) 498-7866

baer@feinonline.com

www.feinonline.com

TOP TEN



Recent Highlights from PCB007

1 **TTM Technologies Consolidates Manufacturing Operations**

TTM Technologies Inc., a major global printed circuit board manufacturer, today announced that it plans to close three facilities in order to improve total plant utilization, operational performance and customer focus.

2 **The Re-industrialisation of Europe**

With an inquisitive mind and a head for challenges, besides the ability to think outside the box and the courage to dare to be different and strive to be first, Spirit Circuits MD Steve Driver can be relied upon to grab the attention of an audience of PCB professionals. As keynote speaker at the Institute of Circuit Technology Hayling Island Seminar, he lived up to his reputation with a motivational presentation, the two themes of which exemplified his latest entrepreneurial venture.

3 **Inaugural Boards, Chips and Packaging IMPACT Conference Adds 15 Industry Experts to Presentation List**

Isola Group and Semico Research announced today that the inaugural event, "Board, Chips and Packaging: Designing to Maximize Results Conference" is garnering significant interest from the embedded design community with the addition of 15 industry experts added to the agenda.

4 **World PCB Production in 2014 Estimated at \$60.2B**

The world market for PCBs reached an estimated \$60.2 billion in value in 2014, growing just 0.7% in real terms, according to IPC's World PCB Production Report for the Year 2014. Production growth in China, Thailand and Vietnam compensated for declining PCB production in most other regions.

5 AT&S Highlights the Future of PCB Industry

Miniaturisation and performance enhancement are leading trends not only for mobile devices such as smartphones; applications in the automotive sector and in medical technology are also getting progressively smaller, more efficient and more powerful.

6 N.A. PCB Book-to-Bill Ratio Reaches Five-year High in August

Total North American PCB shipments increased 1.5% in August 2015 compared to August 2014. Year-to-date shipment growth stood at -0.1, reflecting the negative sales growth rates seen earlier this year. Compared to the previous month, PCB shipments were up 3.6%.

7 Final Surface Finishes for Automotive: No One-Size-Fits-All Solution

Regardless of whether your application is automotive, medical or military, there are many factors to consider when selecting a final surface finish. Cost, lead or lead-free requirements, end environment, shelf life, fine-pitch components, RF applications, probe-ability, thermal resistance and shock and drop resistance, to name a few. There is not a one-size-fits-all finish. Understanding the advantages and disadvantages of each surface finish allows

the designer to select the finish that best fits each particular application.

8 Becoming an Automotive Supplier—Proceed with Caution

Possibly further fueling a growing desire in our industry towards participating in the automotive electronics sector have been further technology advancements in automobiles, as well as a tear in Tesla's stock price and headlines.

9 All Flex Now Offers High Temp Flexible Circuits & Heaters

All Flex, manufacturer of flexible printed circuits and heaters, has developed a polyimide-based material set specifically targeting the market for high temperature flexible circuits and flexible heaters. Increasing demands for high temperature applications have driven the development process at All Flex over the past 18 months.

10 Testing Flexible Circuits, Part 2: Raw Materials and Components

Even though the raw materials may individually meet certain specifications, it is important to determine if the final product configuration meets those specs, which means that testing done at the finished circuit level is also needed.

For the latest PCB news and information, visit: PCB007.com



EVENTS

For the IPC Calendar of Events, [click here](#).

For the SMTA Calendar of Events, [click here](#).

For the iNEMI Calendar of Events, [click here](#).

For the complete PCB007 Calendar of Events, [click here](#).

LA/Orange County Expo & Tech Forum

November 5, 2015
Long Beach, California, USA

CEA Innovate!

November 8–10, 2015
New York City, New York, USA

productronica 2015

November 10–13, 2015
Munich, Germany

2015 EFRA-CEFC Workshop

November 11, 2015
Munich, Germany

Space Coast Expo & Tech Forum

November 12, 2015
Melbourne, Florida, USA

Indiana Fall Forum & Expo

November 13, 2015
Columbus, Indiana, USA

LED Assembly, Reliability & Testing Symposium

November 17–19, 2015
Atlanta, Georgia, USA

Rapid Oven Setup & PCB Profiling – Seminar

November 24, 2015
Warwickshire, UK

2015 International Printed Circuit & APEX South China Fair

December 2–4, 2015
Shenzhen, China

IPC APEX EXPO Conference & Exhibition 2016

March 15–17, 2016
Las Vegas, Nevada, USA



PUBLISHER: **BARRY MATTIES**
barry@iconnect007.com

SALES: **ANGELA ALEXANDER**
(408) 489-8389; angela@iconnect007.com

MARKETING SERVICES: **TOBEY MARSICOVETERE**
(916) 266-9160; tobey@iconnect007.com

EDITORIAL:
MANAGING EDITOR: **PATRICIA GOLDMAN**
(724) 299-8633; patty@iconnect007.com

TECHNICAL EDITOR: **PETE STARKEY**
+44 (0) 1455 293333; pete@iconnect007.com

MAGAZINE PRODUCTION CREW:
PRODUCTION MANAGER: **MIKE RADOGNA**
mike@iconnect007.com

MAGAZINE LAYOUT: **RON MEOGROSSI**

AD DESIGN: **MIKE RADOGNA, SHELLY STEIN,**
TOBEY MARSICOVETERE

INNOVATIVE TECHNOLOGY: **BRYSON MATTIES**

COVER: **SHELLY STEIN**

PCB007 Presents

**the
pcb
magazine**

The PCB Magazine® is published by BR Publishing, Inc., PO Box 50, Seaside, OR 97138

©2015 BR Publishing, Inc. does not assume and hereby disclaims any liability to any person for loss or damage caused by errors or omissions in the material contained within this publication, regardless of whether such errors or omissions are caused accidentally, from negligence or any other cause.

November 2015, Volume 5, Number 11 • The PCB Magazine© is published monthly, by BR Publishing, Inc.

ADVERTISER INDEX

Arlon.....	11	Mortech.....	39
atg Luther & Maelzer GmbH.....	13	Mutrax.....	9
Burkle North America.....	69	Nano Systems.....	65
Dibble Leaders.....	79	Nordson MARCH.....	35
DIS.....	45	OMG Electronic Chemicals.....	37
Electra Polymers.....	33	Os-tech.....	71
ESI.....	5	Panasonic.....	31
Fein-line Associates.....	83	Plasma Etch.....	17
First EIE.....	21	Prototron.....	63
Gardien.....	29	Rogers.....	57
HKPCA.....	3	Schmid.....	55
I-Connect007.....	88	Shengyi Technology.....	43
Insulectro.....	25	Taiyo America.....	19
IPC.....	67, 81	The PCB List.....	2, 75
Isola.....	7	The Right Approach Consulting...	73
Matrix USA.....	51	Ucamco.....	49
Mentor.....	23	Ventec.....	47, 61
Meptec.....	41		

Coming Soon to *The PCB Magazine:*

.....
**December:
Associations and
2016 Events**

**January:
Medical
Electronics:
Getting the
Vitals**

I-Connect007

GOOD FOR THE INDUSTRY



FREE SUBSCRIPTION



subscribe.icconnect007.com

EDITORIAL CONTACT

Patty Goldman

patty@icconnect007.com

+1 724.299.8633 GMT-4



mediakit.icconnect007.com

SALES CONTACT

Barb Hockaday

barb@icconnect007.com

+1 916 365-1727 GMT-7



www.icconnect007.com